

# VITAPAN EXCELL®

Perfect shape. Shade accuracy. Light dynamics.



VITA shade determination

VITA shade communication

VITA shade reproduction

VITA shade control

Date of issue: 08.17

VITA – perfect match.

**VITA**

## CONCEPT AND BENEFITS

**VITAPAN EXCELL®** is a new generation of denture tooth for brilliant vitality of shape, shade and play of light. More information can be found on the following pages.



## WE WILL BE GLAD TO HELP

› More information about the products and processing is available at [www.vita-zahnfabrik.com](http://www.vita-zahnfabrik.com)



### Hotline Sales Support

Mr. Udo Wolfner and his team (Internal Sales Department) will be glad to assist you with orders or questions about the delivery, product data and marketing materials.

▶ Phone +49 (0) 7761 / 56 28 84

Fax +49 (0) 7761 / 56 22 99

8:00 a.m. to 5 p.m. CET

E-mail: [info@vita-zahnfabrik.com](mailto:info@vita-zahnfabrik.com)



### Technical Hotline

If you have technical questions concerning VITA PROSTHETIC SOLUTIONS, you can contact our technical specialists Mr. Ralf Mehlin or Mr. Daniel Schneider.

▶ Phone +49 (0) 7761 / 56 22 22

Fax +49 (0) 7761 / 56 24 46

8:00 a.m. to 5 p.m. CET

E-mail: [info@vita-zahnfabrik.com](mailto:info@vita-zahnfabrik.com)





*VITAPAN EXCELL: Tooth moulds with vitality and golden proportions*

## BRILLIANT VITALITY IN SHAPE, SHADE AND PLAY OF LIGHT



### **What?**

- VITAPAN EXCELL is a new generation of MRP composite anterior tooth that boasts a brilliant play of shape, shade and light for natural-looking dentures.

### **What for?**

- VITAPAN EXCELL is perfect for highly esthetic full, partial and implant-retained dentures.

### **With what?**

- VITAPAN EXCELL Anterior and VITAPAN LINGOFORM Posterior are the matched, multifunctional combination for all common occlusal concepts.



lifelike three-dimensional moulds

brilliant play of shade and light

## THE BENEFITS



### **Naturally esthetic results**

- Simple fabrication of highly esthetic dentures due to lifelike tooth moulds with "golden" proportions

### **Brilliant play of shade and light**

- Brilliant play of shade and light thanks to excellent light dynamics and harmonious shade progression

### **Very good shade accuracy**

- Allows good shade reproduction with remaining natural dentition, due to excellent shade accuracy to the shade guide

### **High durability**

- Excellent durability you can rely on, thanks to abrasion-resistant MRP composite material





## Criteria for a new generation

### An anterior tooth requires:

- ✓ "Golden" proportions in terms of length, width, etc.
- ✓ Perfectly aligned tooth axes
- ✓ Natural angle/curvature characteristics

### An anterior tooth needs:

- ✓ Natural light transmission
- ✓ Vitality in light dynamics

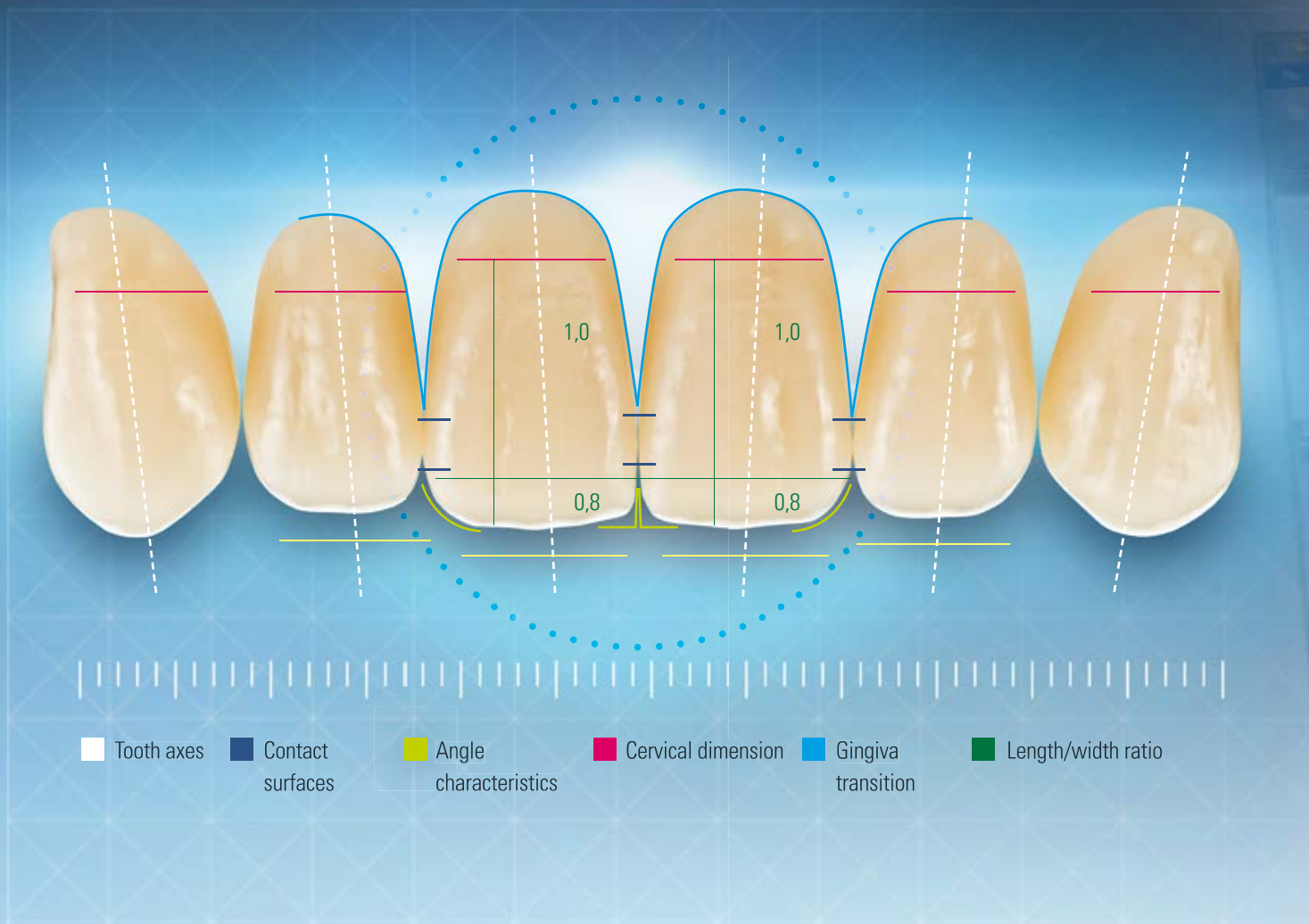
### An anterior tooth must have:

- ✓ Excellent shade accuracy in accordance with the VITA shade standard
- ✓ A harmonious shade transition



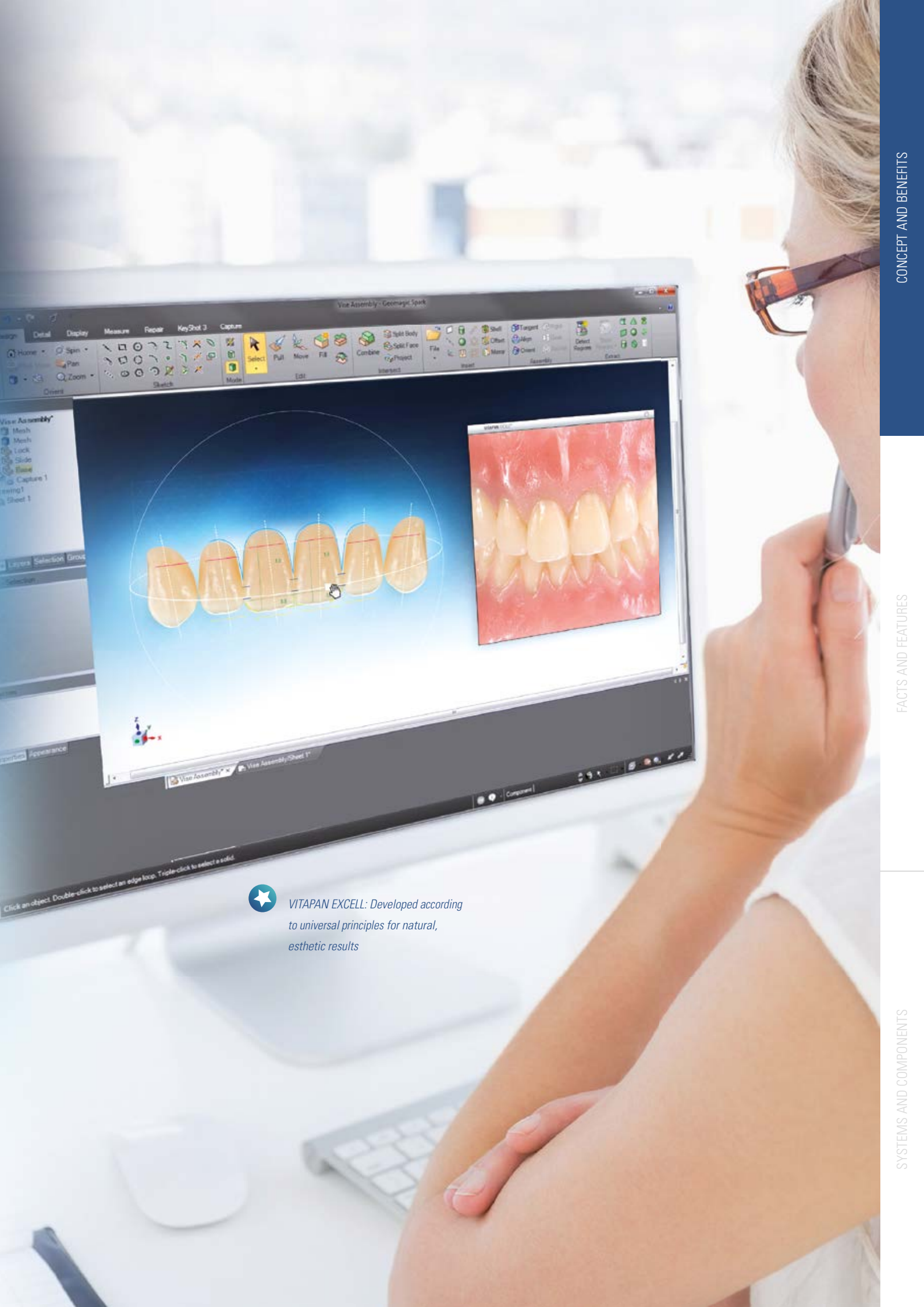
*VITAPAN EXCELL: A new generation developed with a passion for detail*

## THE PROSTHETIC TOOTH WITH GOLDEN PROPORTIONS



### VITAPAN EXCELL allows for:

- **Easy replication of the natural symmetry**  
thanks to moulds with a well-balanced length/width ratio
- **Convenient reproduction of the tooth position**  
thanks to anterior teeth with "perfectly" aligned tooth axes



*VITAPAN EXCELL: Developed according to universal principles for natural, esthetic results*

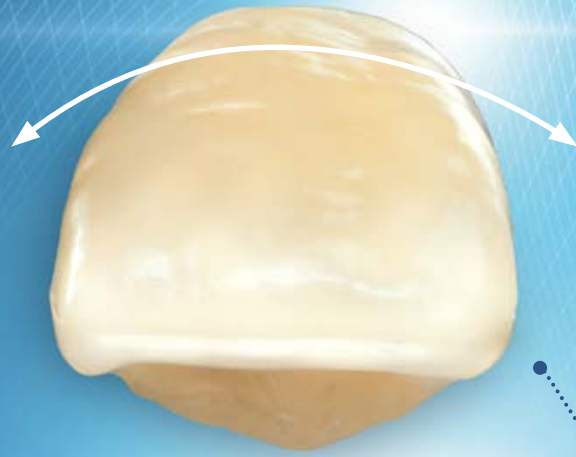
## DESIGN BASED ON NATURAL TEETH



*VITAPAN EXCELL: The denture tooth for perfect modeling of interproximal areas and papilla*

### **VITAPAN EXCELL allows for:**

- **Top-class gingiva modeling for optimum red-white esthetic**  
thanks to wide cervical dimensions

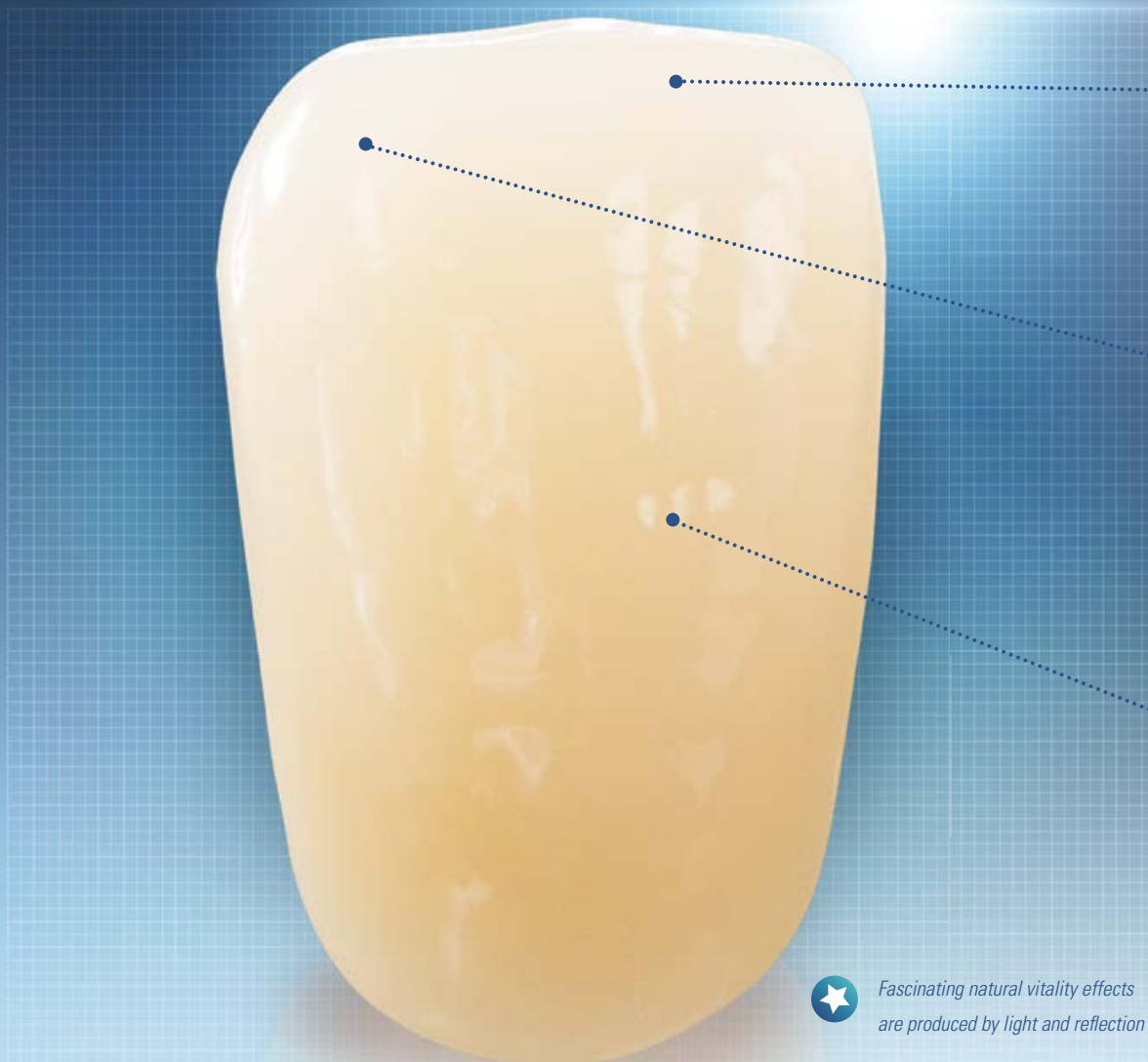


VITAPAN EXCELL offers natural curvature characteristics

**VITAPAN EXCELL allows for:**

- **Vitality in play of shape**  
thanks to moulds with natural angle/curvature characteristics

## FASCINATING PLAY OF SHADE AND LIGHT IN ALL FACETS



*Fascinating natural vitality effects  
are produced by light and reflection*

### **VITAPAN EXCELL shows:**

- **Good light transmission**  
thanks to pronounced enamel area
- **Light dynamics with vitality**  
thanks to the integrated opal effect
- **Brilliant play of light**  
thanks to a multifaceted surface texture

Good light transmission

VITAPAN EXCELL shows a natural translucency in the incisal area for a natural play of light.

Integrated mamelon/opalescence

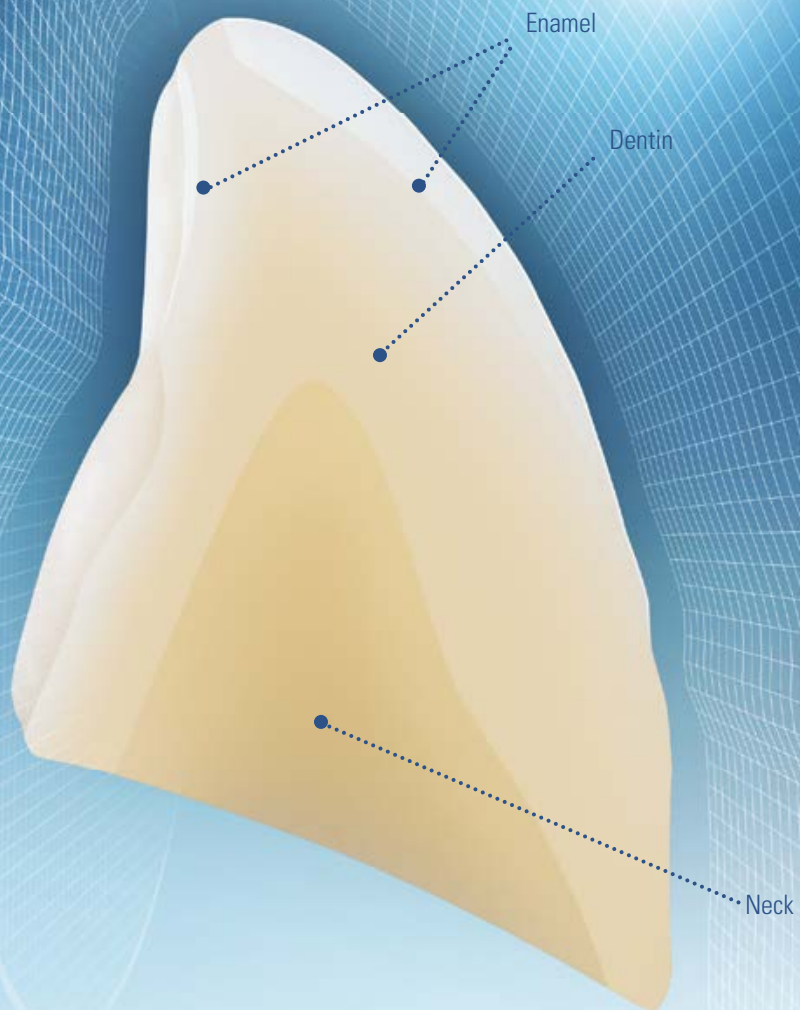
Thanks to the integrated opal effect, VITAPAN EXCELL shows a variety of natural shade facets.

Multifaceted surface texture

In order to ensure natural diffusion and reflection of light, VITAPAN EXCELL has a multifaceted surface texture.



## NATURAL EFFECT, HARMONIOUS TRANSITION



### VITAPAN EXCELL offers:

- **Harmonic shade transmission from cervical area to incisal edge**  
thanks to its unique 3D shade layering\*

\*) Systematic diagram of the VITAPAN EXCELL layer structure





VITAPAN EXCELL ◀

Excellent shade accuracy is very important in a denture tooth, especially when the other teeth are natural

▶ VITA shade standard

**VITAPAN EXCELL offers:**

- **Excellent shade accuracy in accordance with the VITA shade standard**  
thanks to matching lightness, chroma and hue values

## CONCEPTS AND INDICATIONS



### **Anterior/Posterior combination**

A perfect combination: VITAPAN EXCELL and VITAPAN LINGOFORM

- For the best prosthetics in shape, shade and function
- Universal use in all prosthetic concepts, thanks to multifunctional design

### **Occlusion concepts**

- For lingual/balanced occlusion concepts:  
e.g. according to Gysi, Prof. A. Gerber, APF/TiF, ABC

### **Indications**

- Recommended for full and partial dentures
- Recommended for implant-supported dentures



A woman with dark hair in a ponytail, wearing a white lab coat, is shown in profile from the chest up. She is looking out a window in a laboratory or industrial setting. The background is slightly blurred, showing window frames and some equipment. A semi-transparent white box with a thin blue border is overlaid on the lower part of the image, containing text.

## FACTS AND FEATURES

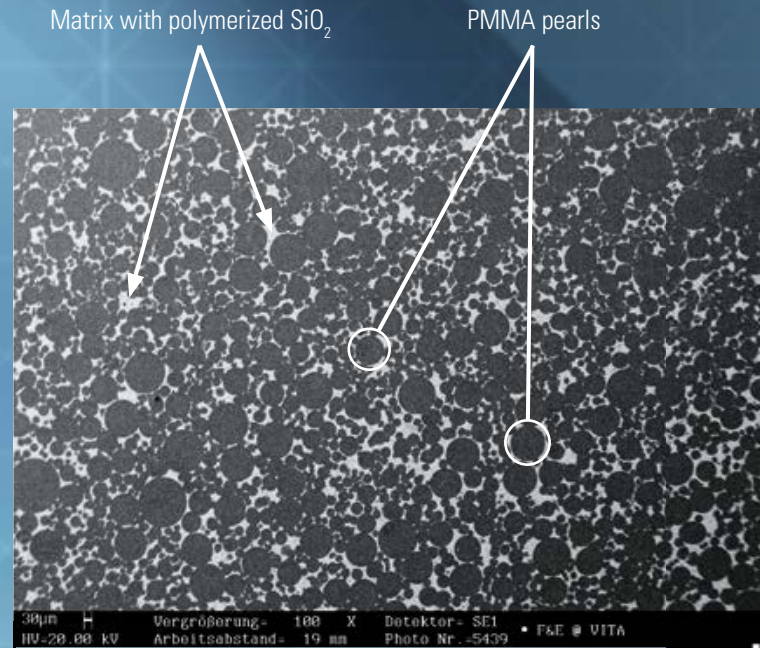
**VITAPAN EXCELL®** is a lab-tested denture tooth designed by technicians, for technicians. Now you can find out more about its materials, manufacturing process and lab users.



*With VITA denture teeth, you can rely on the highest production standards and fully tested quality*



# VITAPAN EXCELL® – 100 % GERMAN DENTAL ENGINEERING BY VITA



REM image of VITA MRP composite material; source: VITA R&D



## Development, design and mould construction

Optimized for practical use

VITAPAN EXCELL was designed and constructed based on natural teeth. VITA's developers and engineers received input and ideas for the product from experienced dental technicians all around the world.



## MRP composite material

For high durability

The VITAPAN EXCELL denture tooth is made of MRP (Microfiller-Reinforced Polymer matrix) composite material and has a highly cross-linked polymer matrix with homogeneously distributed, polymerized silicon dioxide filler particles.



German engineering combined with dental technology – since 1924



### Modern manufacturing process

For top quality

VITAPAN EXCELL is manufactured at the VITA Zahnfabrik headquarters in south Germany according to the strictest production and quality standards – to ensure that the prosthetics offer lasting reliability.



### Lab testing

For reliable use

Prior to its launch, VITAPAN EXCELL was tested in a number of labs around the world in order to ensure the quality and reliability of the denture tooth.



LAB-TESTED: 96% SATISFACTION WITH VITAPAN EXCELL®

## Expert opinions on the esthetic appearance of VITAPAN EXCELL®

*"The shape and surface texture are beautiful, everything looks very natural!"*

*Urban Christen, DD, dentist, Hunzenschwil, Switzerland*

*"VITAPAN EXCELL shows no breaks in shade in the vestibular area – just a beautiful, flowing transition!"*

*Andreas Buchheimer, DT, Schopfheim, Germany*

*"The texture, the shade transition, the dentin-incisal ratio ... it all gives the tooth a great vitality!"*

*Daniel Sperlich, MDT, Freiburg, Germany*

*"VITAPAN EXCELL is something completely new ... it exceeded my expectations!"*

*Tim Friedland, DT, Osnabrück, Germany*







*"What really makes VITAPAN EXCELL interesting is its shape, shade and texture!"*

*Gudrun Hecker, DT, Aschau am Inn, Germany*

#### **Results according to beta testing by dental technicians\***

- **96% satisfaction with esthetic appearance**

96% of the technicians included in the survey rated the esthetic appearance of VITAPAN EXCELL as "good" or "very good"

- **Shape, shade and texture rated especially high**

The technicians in the survey were particularly impressed with the shape, shade and surface texture of VITAPAN EXCELL

\*) Source: Survey as part of VITAPAN EXCELL testing in selected dental labs (N=25), Study and report: 4eins41 Corporate Management and Market Research, 10/2016 ([1], see back of brochure)

## **SYSTEM AND COMPONENTS**

Now let's take a closer look at the variety of shades and shapes, recommended combinations and available system components.

★ *For generations, dental technicians and VITA have been united by a passion for prosthetic solutions.*



## SHADES AND MOULDS

### VITAPAN EXCELL® Anterior

#### > Available shades:

- **11 x VITA SYSTEM 3D-MASTER® shades**  
0M3, 1M1, 1M2, 2L1.5, 2M1, 2M2, 2R1.5, 3L2.5, 3M2, 3R2.5, 4M2
- **15 x VITA classical A1–D4® shades**  
A1 – D4 (without B1)

### VITAPAN® LINGOFORM Posterior

#### > Available shades:









- **27 x VITA SYSTEM 3D-MASTER® shades**  
0M3, 1M1 – 5M3
- **15 x VITA classical A1–D4® shades**  
A1–D4 (without B1)

VITAPAN EXCELL Upper Anteriors							
 ovoid	<b>041</b>  9.1 7.4	<b>043</b>  9.1 7.9	<b>045</b>  9.7 8.4	<b>047</b>  10.3 8.6	<b>049</b>  10.9 9.0	<b>051</b>  12.3 9.3	
 triangular	<b>T42</b>  9.5 7.7	<b>T44</b>  9.9 8.1	<b>T46</b>  10.4 8.2	<b>T47</b>  10.9 8.5	<b>T48</b>  11.3 8.8	<b>T50</b>  11.6 9.2	<b>T54</b>  12.7 9.8
 rectangular	<b>R45</b>  9.9 8.2	<b>R47</b>  11.2 8.6	<b>R49</b>  11.7 8.9				
 square	<b>S46</b>  10.3 8.5						
VITAPAN EXCELL Lower Anteriors							
	<b>L33</b>  8.6 5.0	<b>L35</b>  9.0 5.2	<b>L37</b>  9.4 5.2	<b>L39</b>  9.8 5.9	<b>L41</b>  10.2 6.2		

### VITAPAN LINGOFORM Posteriors

<b>21L</b>  9.6  10.0	<b>22L</b>  10.0  10.2	<b>23L</b>  10.9  10.8	<b>24L</b>  11.0  11.2
---	--	--	--

## RECOMMENDED COMBINATIONS

VITAPAN EXCELL Anterior		VITAPAN LINGOFORM Posterior		VITAPAN EXCELL Anterior		VITAPAN LINGOFORM Posterior	
UJ / No.  mm	LJ / No.  mm	UJ / No.  mm	LJ / No.  mm	UJ / No.  mm	LJ / No.  mm	UJ / No.  mm	LJ / No.  mm
<b>041</b> 41.3	<b>L33</b> 33.2	<b>21L</b> 30.1	<b>21L</b> 30.7	<b>T42</b> 42.0	<b>L33</b> 33.2	<b>21L</b> 30.1	<b>21L</b> 30.7
<b>043</b> 43.1	<b>L33</b> 33.2	<b>21L</b> 30.1	<b>21L</b> 30.7	<b>T44</b> 44.1	<b>L33</b> 33.2	<b>21L</b> 30.1	<b>21L</b> 30.7
<b>045</b> 45.1	<b>L35</b> 35.3	<b>22L</b> 31.6	<b>22L</b> 32.1	<b>T46</b> 46.2	<b>L35</b> 35.3	<b>22L</b> 31.6	<b>22L</b> 32.1
<b>047</b> 47.3	<b>L37</b> 37.3	<b>22L</b> 31.6	<b>22L</b> 32.1	<b>T47</b> 46.9	<b>L37</b> 37.3	<b>22L</b> 31.6	<b>22L</b> 32.1
<b>049</b> 49.1	<b>L39</b> 39.0	<b>23L</b> 34.2	<b>23L</b> 34.8	<b>T48</b> 48.1	<b>L37</b> 37.3	<b>22L</b> 31.6	<b>22L</b> 32.1
<b>051</b> 51.4	<b>L41</b> 41.2	<b>24L</b> 35.8	<b>24L</b> 36.4	<b>T50</b> 50.0	<b>L39</b> 39.0	<b>24L</b> 35.8	<b>24L</b> 36.4
				<b>T54</b> 54.4	<b>L41</b> 41.2	<b>24L</b> 35.8	<b>24L</b> 36.4
				<b>R45</b> 45.4	<b>L35</b> 35.3	<b>22L</b> 31.6	<b>22L</b> 32.1
				<b>R47</b> 47.0	<b>L37</b> 37.3	<b>22L</b> 31.6	<b>22L</b> 32.1
				<b>R49</b> 49.1	<b>L39</b> 39.0	<b>23L</b> 34.2	<b>23L</b> 34.8
				<b>S46</b> 46.3	<b>L35</b> 35.3	<b>22L</b> 31.6	<b>22L</b> 32.1

The information contained in the combination table is only intended as a guide, and can vary depending on the patient's individual situation.

## ASSORTMENTS AND STORAGE



### VITAPAN EXCELL mould charts

Metal case with all moulds for selecting teeth:

- VITAPAN EXCELL Anterior

### VITAPAN EXCELL tooth storage

- X-small\*: 67 Sets/402 Anteriors
- Small\*: 134 Sets/804 Anteriors
- Medium\*: 268 Sets/1,608 Anteriors
- Large\*: 400 Sets/2,400 Anteriors

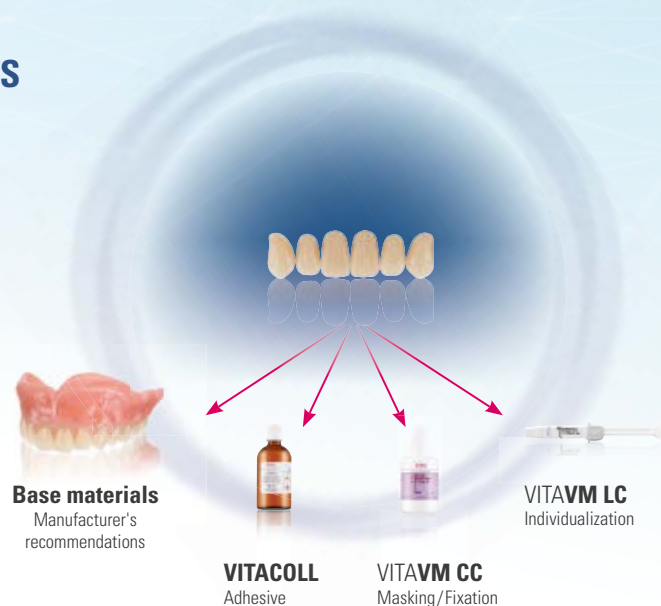
Available in VITA classical A1–D4® and VITA SYSTEM 3D-MASTER® shades.\*\*



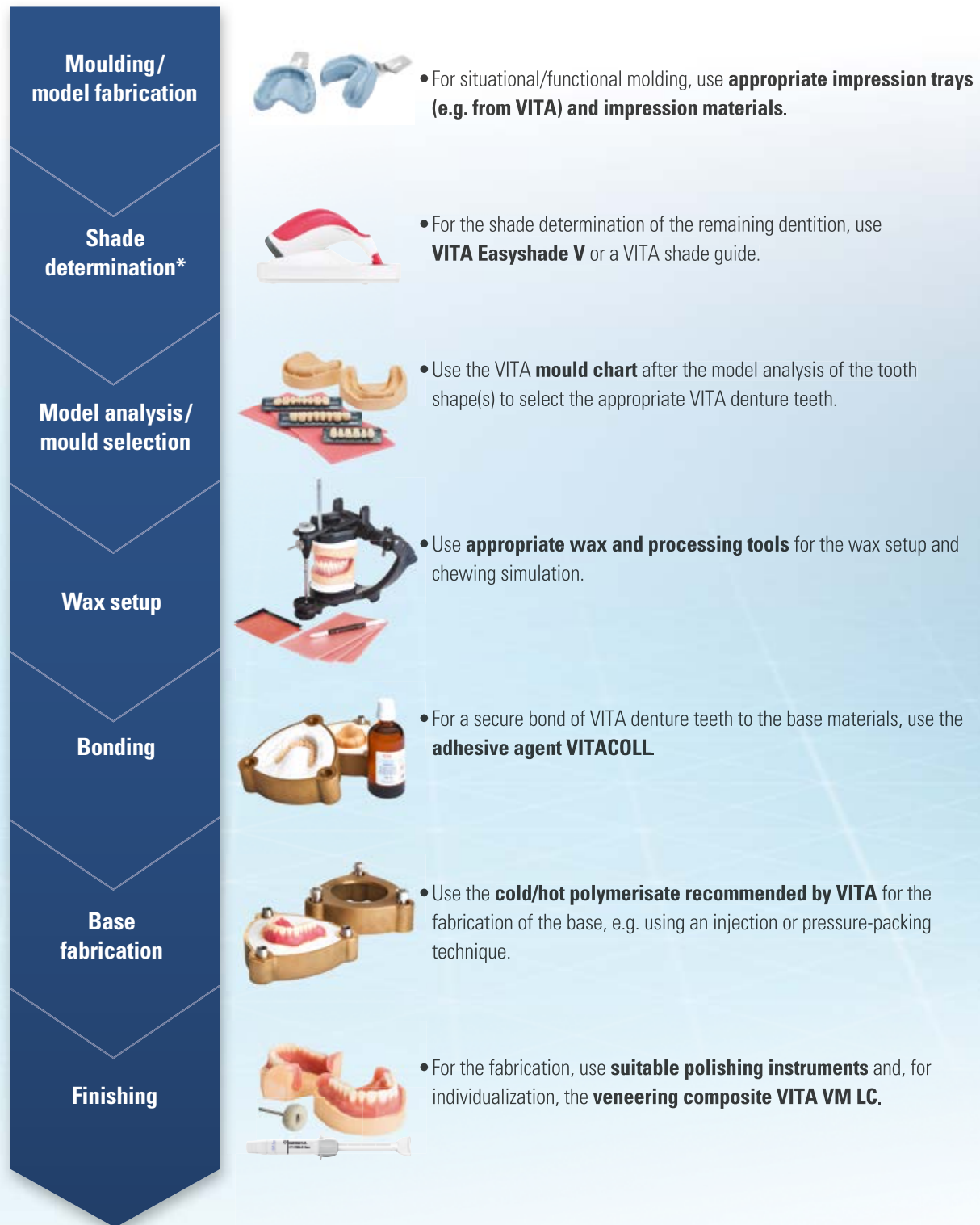
\*) Note: You will receive the most frequently used moulds and shades with the packaged tooth storage. We are also happy to put together storage systems according to your individual specifications.

\*\*\*) see available shades

## SYSTEM COMPONENTS



## PERFECT SOLUTIONS FOR FABRICATION



\*) Visual or technical shade determination only takes place if there is any remaining natural dentition.





## VITA PROSTHETIC SOLUTIONS –

For the best dental prosthetics: natural, reliable, rich in variation.

**Efficient CAD/CAM dentures for greater productivity.**



**Best variety of shade and moulds for all cases.**



**Solid, standard dentures with excellent cost efficiency.**



VITAPAN EXCELL® (anterior)  
VITAPAN® LINGOFORM (posterior)

> **Vivid play of shape and shade for natural results.**

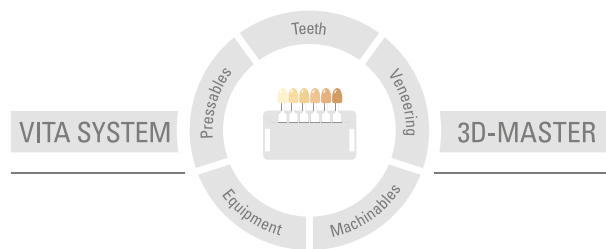
### **Manufacturing high-end dentures**

VITA PREMIUM PROSTHETIC offers you high-value MRP-composite teeth with naturally vivid play of shape and shade for the best, highly esthetic full, partial and implant-retained dentures.

More information about VITAPAN EXCELL is available at  
[www.vita-zahnfabrik.com/prosthetics](http://www.vita-zahnfabrik.com/prosthetics)

**1. VITAPAN EXCELL testing survey:**

4eins41 Corporate Management and Market Research  
Andreas Kuderer, Proprietor, Karlsruhe, Germany  
Report: 10/2016



**Please note:** Our products must be used in accordance with the instructions for use. We accept no liability for any damage resulting from incorrect handling or usage. The user is furthermore obliged to check the product before use with regard to its suitability for the intended area of applications. We cannot accept any liability if the product is used in conjunction with materials and equipment from other manufacturers that are not compatible or not authorized for use with our product. Furthermore, our liability for the accuracy of this information is independent of the legal basis and, in as far as legally permissible, shall always be limited to the value as invoiced of the goods supplied, excluding value-added tax. In particular, as far as legally permissible, we do not assume any liability for loss of earnings, indirect damages, ensuing damages or for third-party claims against the purchaser. Claims for damages based on fault liability (culpa in contrahendo, breach of contract, unlawful acts, etc.) can only be made in the case of intent or gross negligence. The VITA Modulbox is not necessarily a component of the product. Date of issue of this information: 08.17

After the publication of these information for use any previous versions become obsolete. The current version can be found at [www.vita-zahnfabrik.com](http://www.vita-zahnfabrik.com)

VITA Zahnfabrik has been certified in accordance to the Medical Device Directive and the following products bear the CE mark **CE** 0124 :

**VITAPAN EXCELL®**, **VITAPAN® LINGOFORM**, **VITACOLL®**, **VITAFOL® H**, **VITAVM®LC** and **VITAVM®CC**

The products/systems of other manufacturers mentioned in this document are registered trademarks of the respective manufacturers.

# VITA

VITA Zahnfabrik H. Rauter GmbH & Co.KG  
Spitalgasse 3 · D-79713 Bad Säckingen · Germany  
Tel. +49(0)7761/562-0 · Fax +49(0)7761/562-299  
Hotline: Tel. +49(0)7761/562-222 · Fax +49(0)7761/562-446  
[www.vita-zahnfabrik.com](http://www.vita-zahnfabrik.com) · [info@vita-zahnfabrik.com](mailto:info@vita-zahnfabrik.com)  
 [facebook.com/vita.zahnfabrik](https://facebook.com/vita.zahnfabrik)