

REBASE III

The Next Generation of Hard Denture Reline Material



PLEASANT FOR PATIENTS,
NOW easier **THAN EVER TO USE**

REBASE III

REBASE III is the next generation of chairside hard denture reline material, continuing 30 years of legacy and succeeding the preferred choice of dentists - Rebase II.



Key Improvements

- Enhanced mixability
- Extended handling time
- Increased flexural strength
- Even less irritation

Indications

REBASE III is designed for long-term complete and partial* acrylic denture reline applications – resulting in outstanding comfort and a denture fit that lasts.



Indicated For:

- Long-term chairside or laboratory hard denture relining
- Denture repairs
- Extension of denture borders

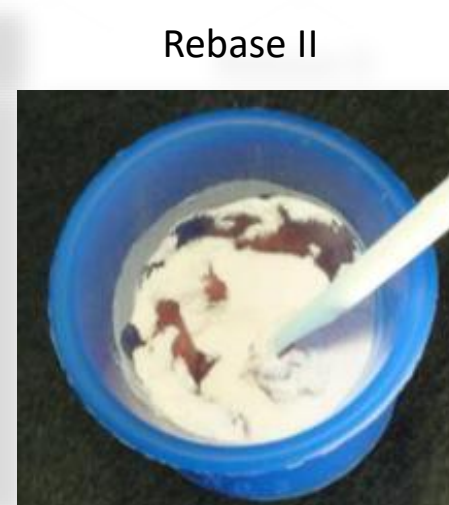
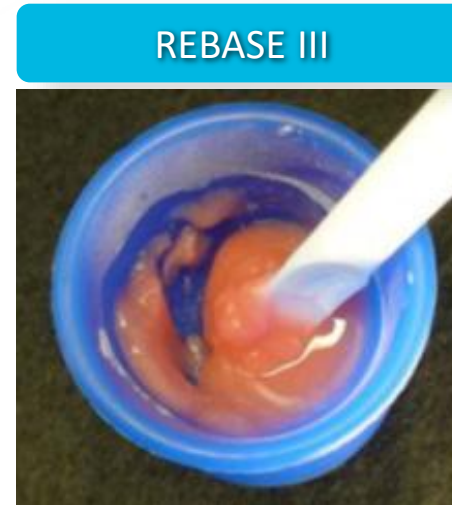
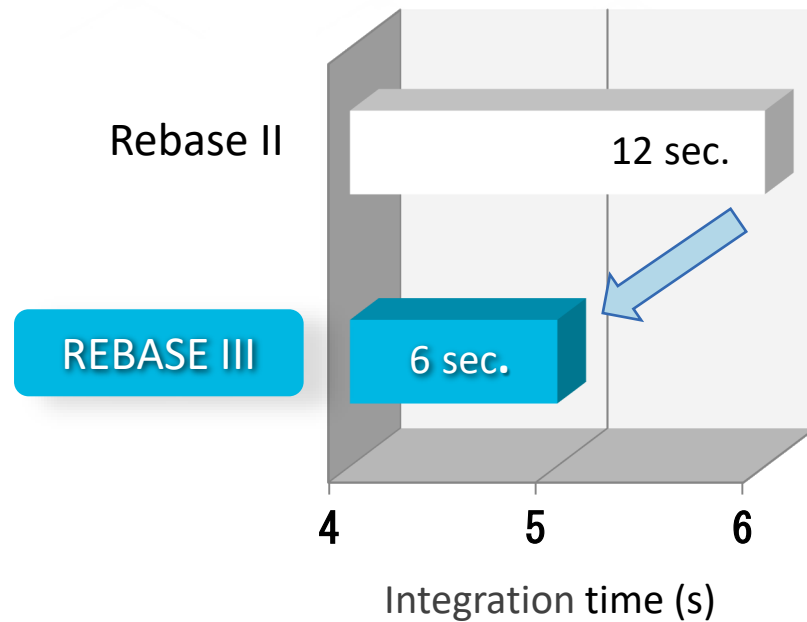
Features and Benefits

With further innovation, REBASE III offers an even more pleasant experience for patients and is now easier than ever to use.

- ✓ Quick and easy mixability
- ✓ Strong adhesion to the denture
- ✓ High resistance to pores and bacteria build-up
- ✓ Less bubble formation
- ✓ Low heat generation
- ✓ Excellent polishability
- ✓ Little to no odor, taste, or irritation
- ✓ Fast chairside procedure complete in 1 visit
- ✓ Increased flexural strength
- ✓ Methyl methacrylate free

Enhanced Mixability

REBASE III powder and liquid integrate much easier and quicker compared to Rebase II – reducing the formation of bubbles and cutting your mixing time in half.

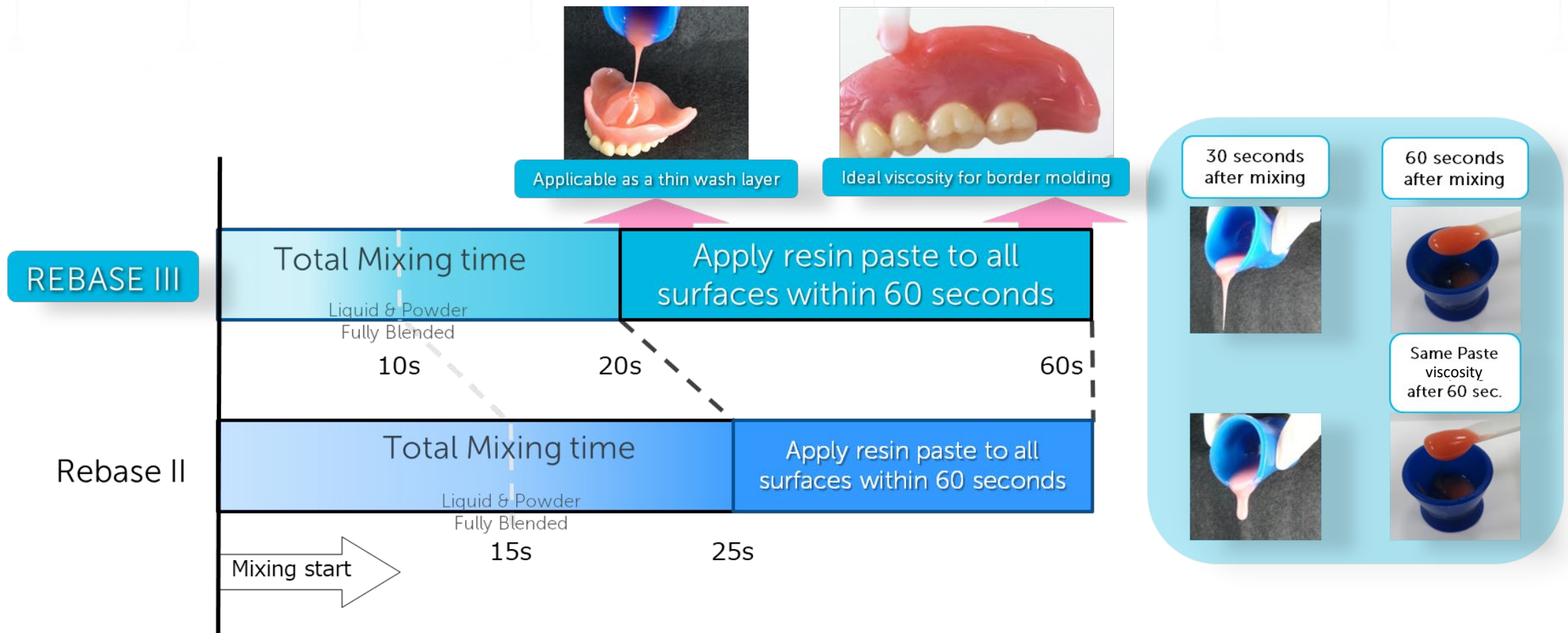


6 seconds after starting to mix

$\frac{1}{2}$ the integration time compared to Rebase II

Extended Handling Time

REBASE III maintains a flowable consistency longer than Rebase II and can now be applied as a thin wash layer immediately after mixing. This extends the handling time without lengthening the overall procedure.



Less Bubble Formation

Easy mixing and flowability of the REBASE III paste work to suppress the formation of bubbles.*

REBASE III



Rebase II



After 10 seconds of mixing

Almost No Odor, Taste, or Irritation

REBASE III has no odor in liquid form and as a paste has very little taste. Now with enhanced monomer composition, REBASE III accomplished a level of *little-to-no* irritation during sensory testing.

Methyl Methacrylate
FREE



Pleasant

REBASE III

Rebase II

GC Reline*

GC Kooliner*

Unpleasant



Increased Flexural Strength

REBASE III features greater flexural strength than other products and proves to be the most durable reline material when subject to high levels of destructive energy, ensuring higher resistance to degradation and failure.

Flexural Strength (MPa)



REBASE III



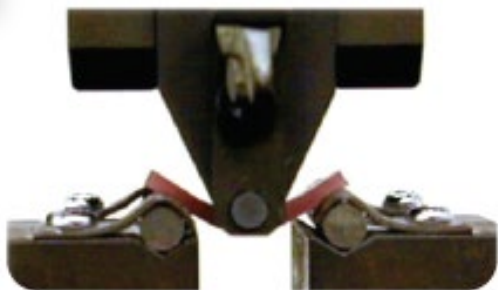
Rebase II



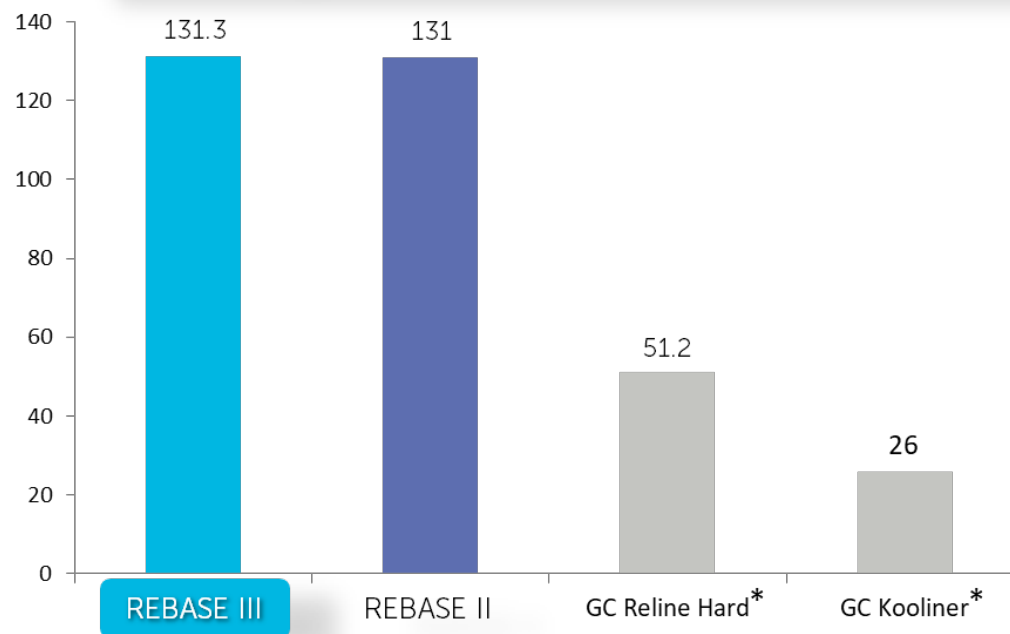
GC Reline Hard*



GC Kooliner*



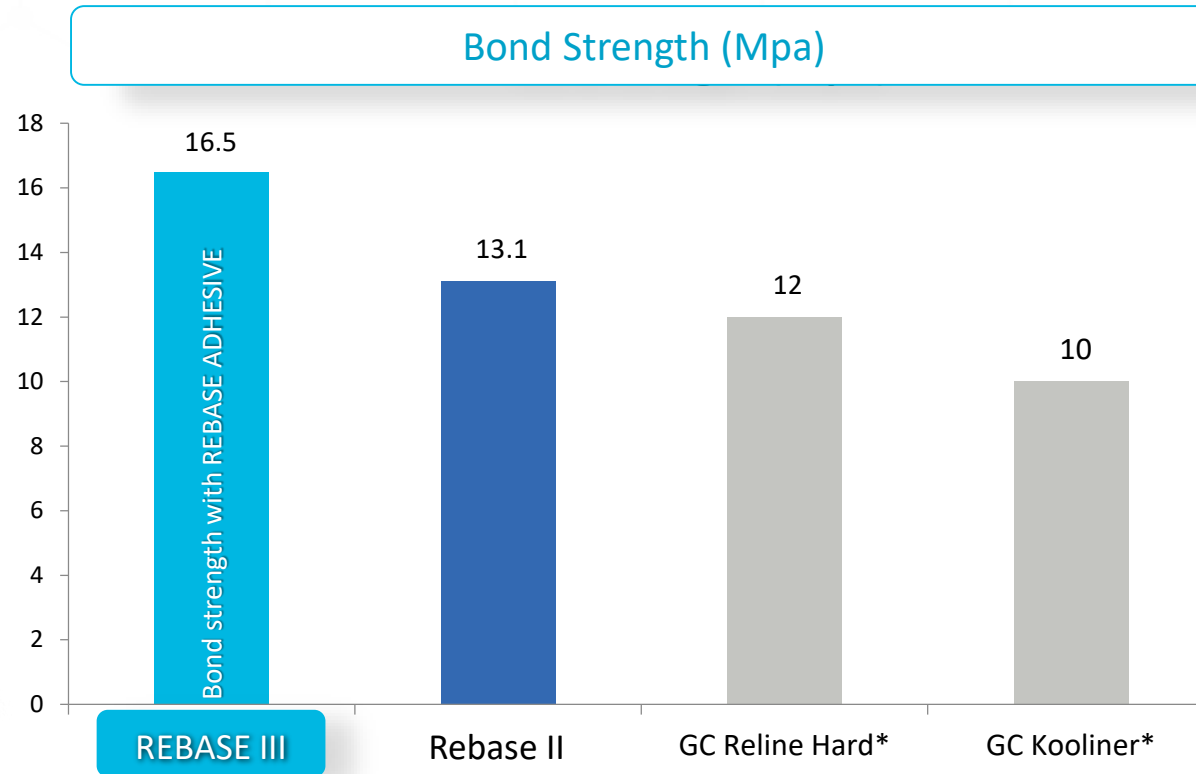
Energy required to break reline material (J)



Rebase remains stable after high destruction energy test

Superior Bond Strength

Just one layer of REBASE ADHESIVE has been proven to achieve higher levels of bond strength.

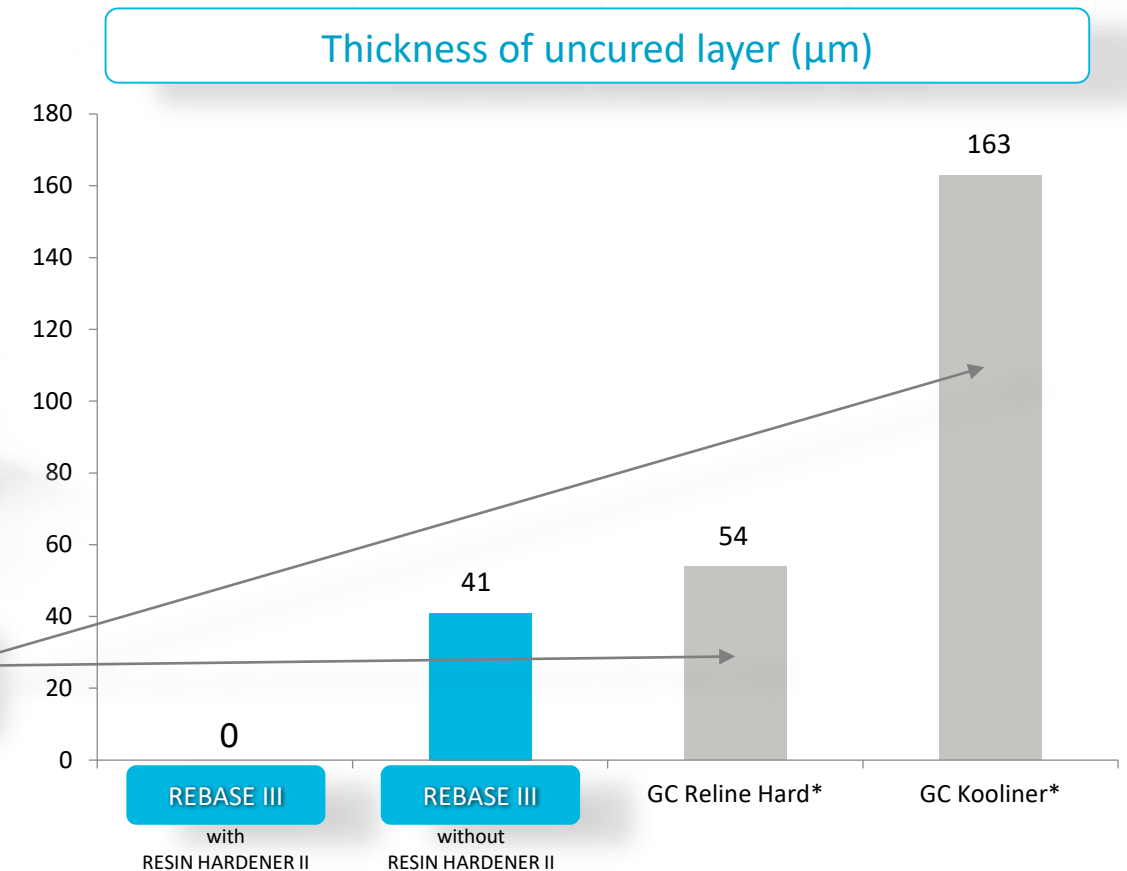


Elimination of Uncured Layer

TOKUSO RESIN HARDENER II completely cures the oxygen inhibited layer of the denture – avoiding bacteria growth, bad odor build up, and maximizing the final polishability of REBASE III.

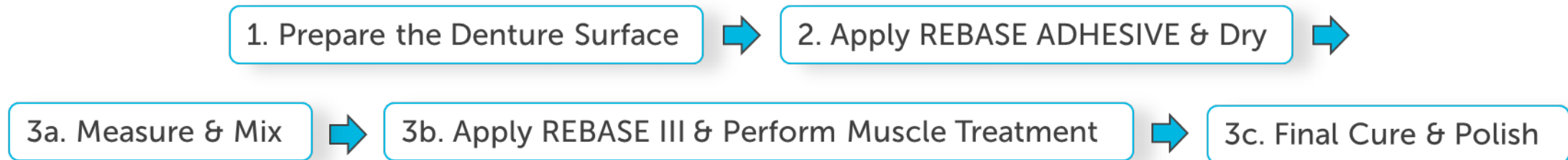


The top layer of other hard reline materials remains uncured, causing the development of pores and bacteria build up.



Procedure Guide

REBASE III follows similar instructions for use as Rebase II. See following slides for important procedure guide changes to note before performing your next denture reline with REBASE III.



Procedure Changes to Note

REBASE III measure and mix tools have been updated.

1. Prepare the Denture Surface



2. Apply REBASE ADHESIVE & Dry



3a. Measure & Mix



3b. Apply REBASE III & Perform Muscle Treatment



3c. Final Cure & Polish

Be sure to only use REBASE III measure and mix tools as the scale is different from Rebase II

Procedure Changes to Note

REBASE III procedure now differs when working with Undercut or Partial Dentures. In this case, final cure will take place extra-orally by immersing into TOKUSO RESIN HARDENER II, rather than intra-orally.

1. Prepare the Denture Surface



2. Apply REBASE ADHESIVE & Dry



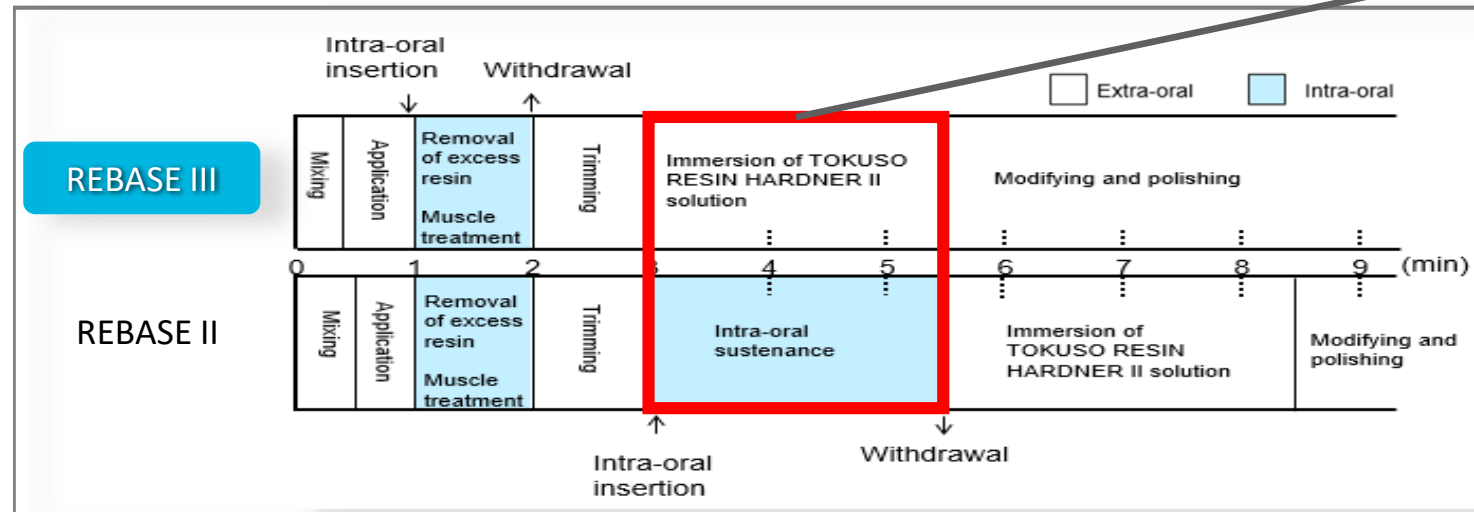
3a. Measure & Mix



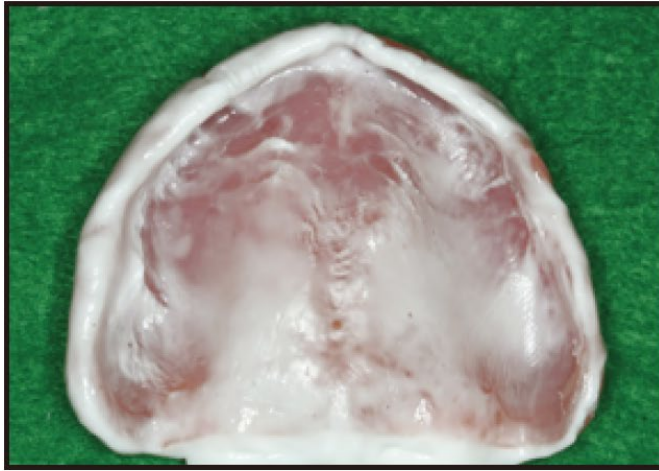
3b. Apply REBASE III & Perform Muscle Treatment



3c. Final Cure & Polish

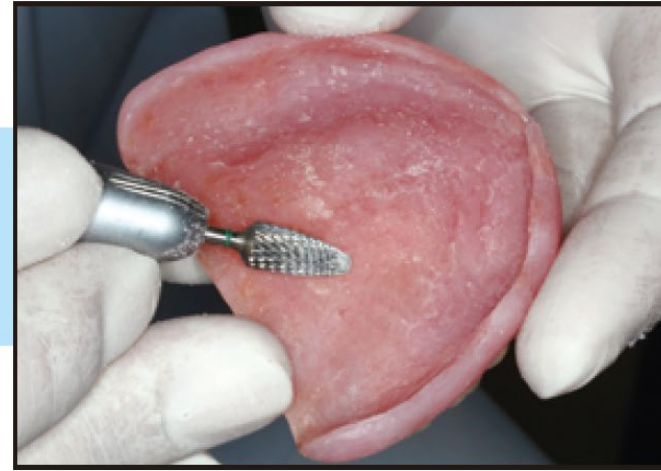


1. Prepare the Denture Surface



1) Checking the adaptation

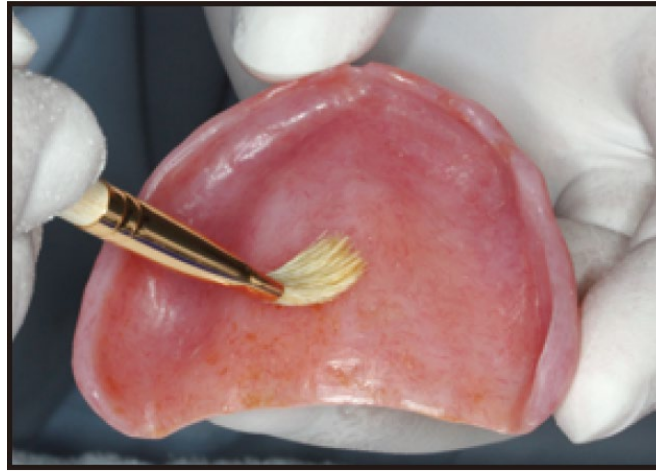
- Check intra-oral condition by inspection and palpation
- Remove the denture from patient's mouth
- Clean and air dry the surface



2) Removal of the denture surface

- Carefully remove old resin and expose the denture surface

2. Apply REBASE ADHESIVE and Dry



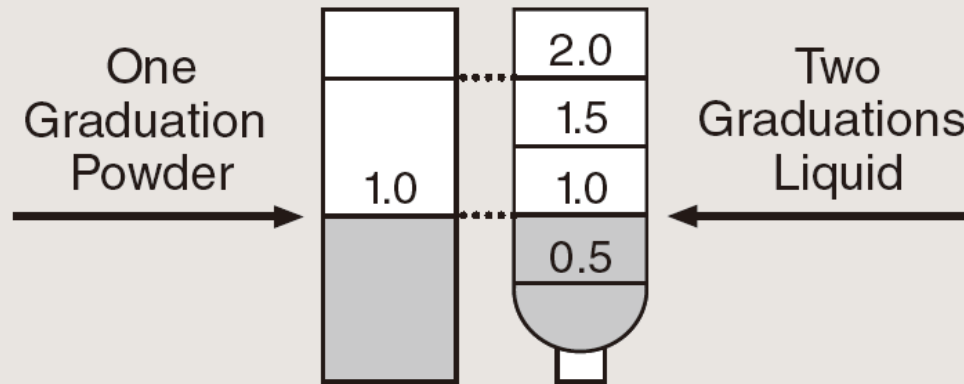
3) Application of ADHESIVE, and dry it

- Apply REBASE ADHESIVE in a single layer with the brush to all areas of the surface to be relined.
- Leave REBASE ADHESIVE for 20 seconds at room temperature to completely air-dry

3a. Measure & Mix

Standard Powder to Liquid Mixing Ratio

One Graduation Powder (1.0)
Two Graduations Liquid (1.0)



4) Measuring

5) Mixture

- Be sure to only use REBASE III measuring tools as the scale is different from Rebase II
- Put the LIQUID in the mixing cup first and then the POWDER
- Mix gently using cross-cutting motions to minimize bubbles.

3b. Apply REBASE III & Perform Muscle Treatment



6) Application of the resin

- With a spatula, apply resin paste to all surfaces being relined
- Apply resin within 20-60 after mixing
- Be careful not to apply too much resin, this could lead to resin flowing down the patient's throat



7) Insertion of the Denture.
Removal of excess resin

- Have the patient bite down correctly at the centric position
- In case excess resin flows into the patient's throat, remove it with a fingertip or an appropriate instrument



8) Muscle Treatment

- When the resin begins to harden, perform the necessary treatment of the muscles in the mouth
- Remove the excess portion of the resin intra-orally
- Be sure to complete within 1 to 2 minutes from the time mixing started

3c. Final Cure & Polish

Partial denture and undercut

If the denture is a partial denture or the patient has an undercut, residual root, etc, remove the denture from the mouth and trim it extra-orally prior to final curing with TOKUSO RESIN HARDENER II.* Otherwise the denture may not be removed from the mouth.

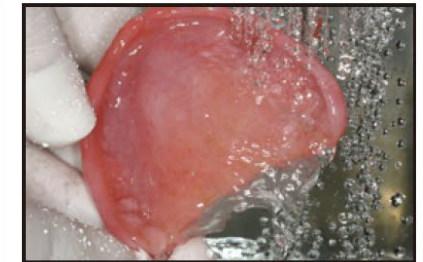
*How to use TOKUSO RESIN HARDENER II



Dissolve 1 scoop of TOKUSO RESIN HARDENER II per 200mL of water(40-60°C (104-140°F))

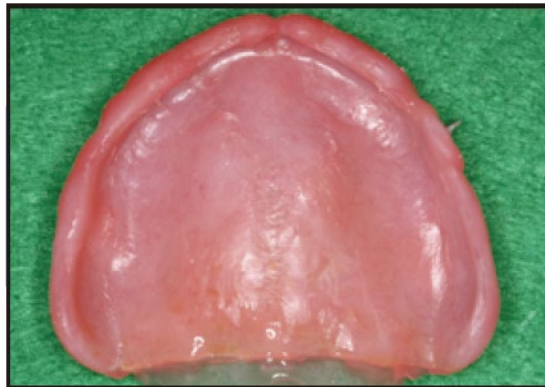


Immerse the relined denture into the solution for more than 3 minutes

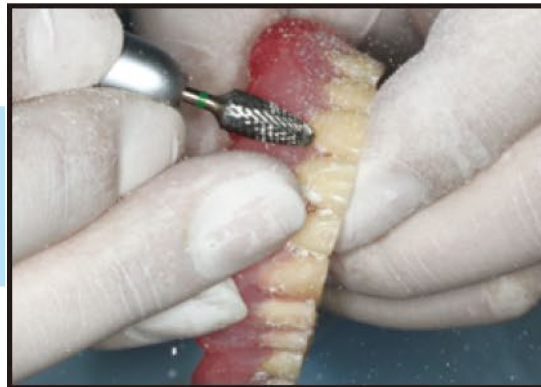


Wash in water

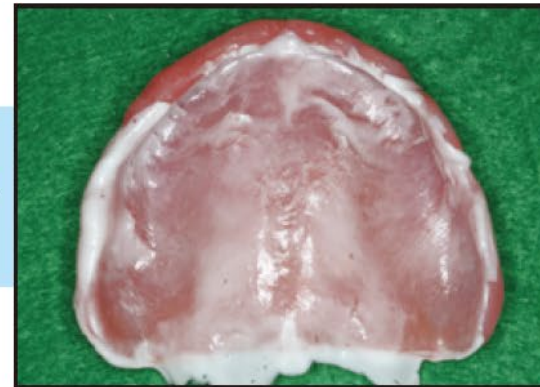
9) Final curing



10) After curing



11) Modifying and polishing



12) Checking the adaptation



13) Completion

Product Offerings



REBASE III KIT Light Pink

- 80g Powder Bottle
- 50mL Liquid Bottle
- 15mL Adhesive Bottle
- 48g TOKUSO Resin Hardener II
- Accessories
 - Measuring cup
 - Plastic cup
 - Dropper
 - Brush
 - Spatula
 - Spoon

Product Number: 20660

Individual Sale



REBASE III Powder Light Pink

- 80g Bottle

Product Number: 20661



REBASE III Liquid

- 50mL Bottle

Product Number: 20662



REBASE Adhesive

- 15mL Bottle

Product Number: 20663



RESIN HARDENER II

- 48g Jar

Product Number: 20171



Innovating Tomorrow's Dentistry, Today™

Contact us:

Tokuyama Dental America
740 Garden View Ct., Ste. 200
Encinitas, CA 92024

1-877-378-3548

Info@tokuyama-us.com

www.tokuyama-us.com