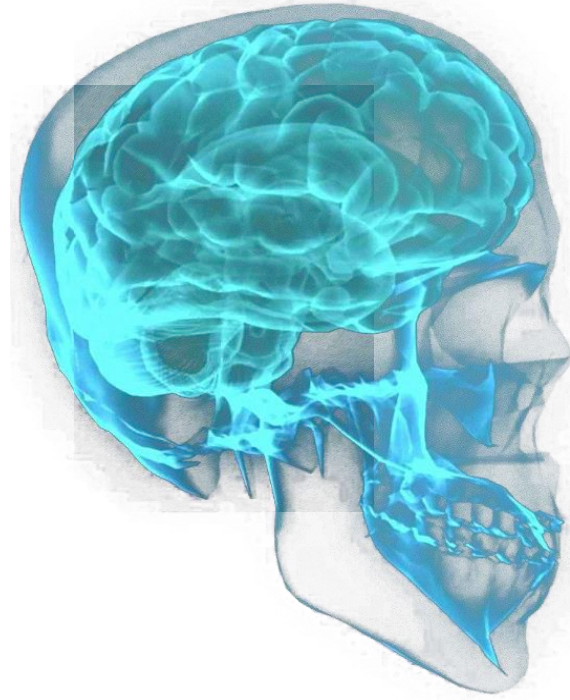
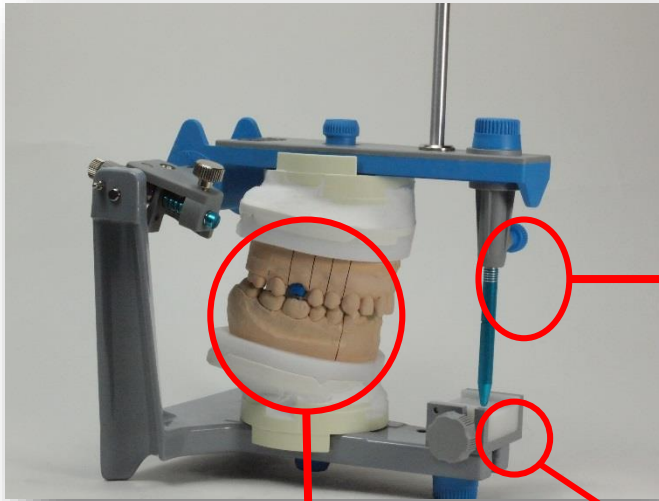


fag dentaire



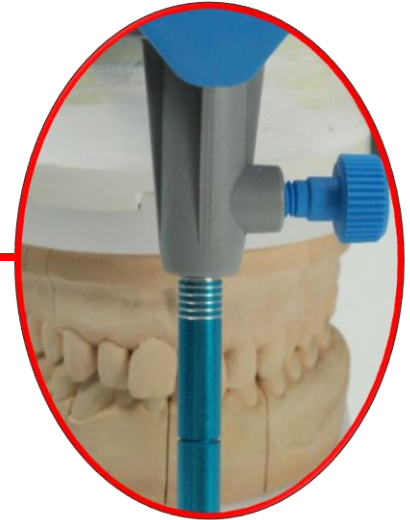
***SMART
OCCLUSION***

Smart Occlusion

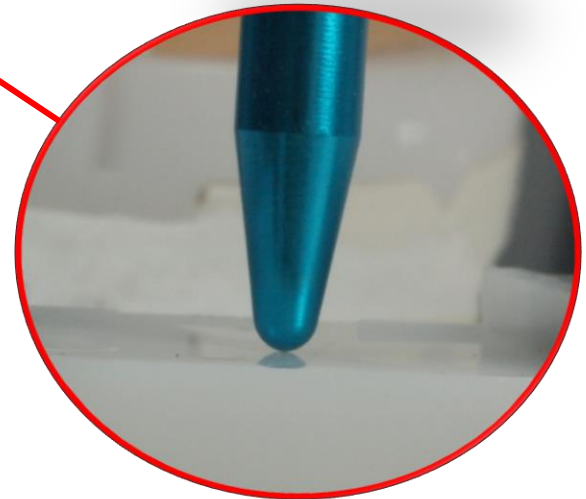
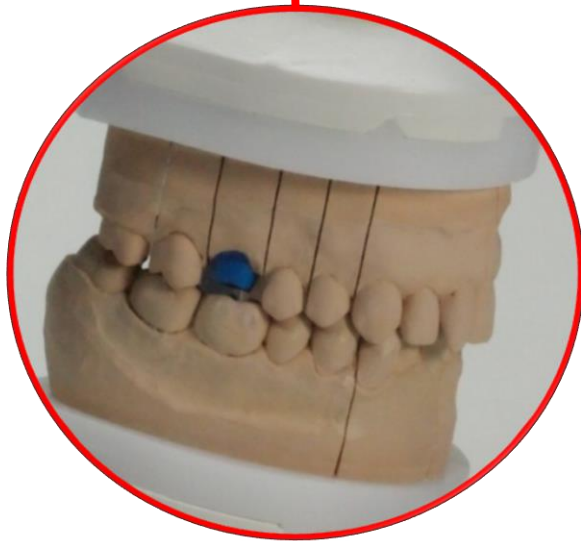


Models in maximal intercuspitation

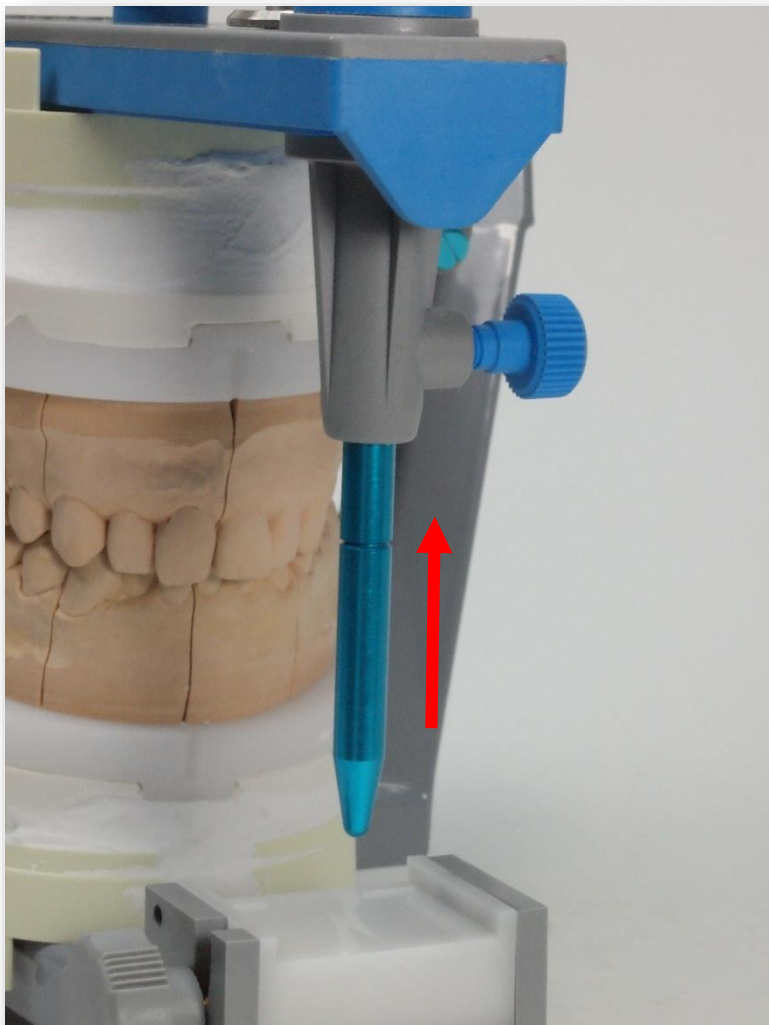
Rod at zero



Rod in contact with the table

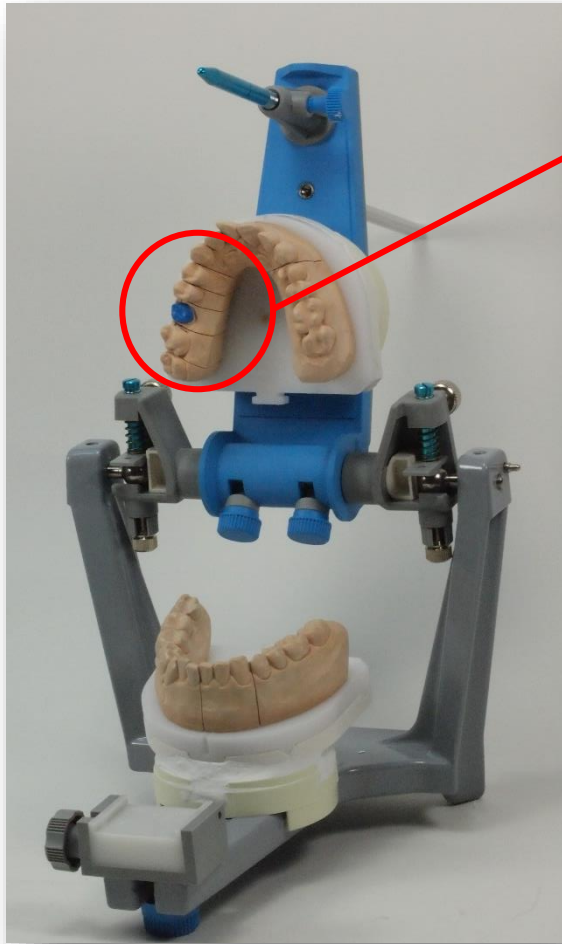


Smart Occlusion / Step n° 1

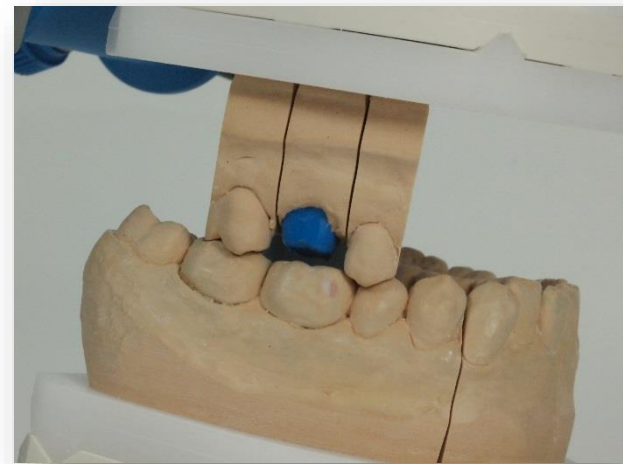


Move up the incisal rod

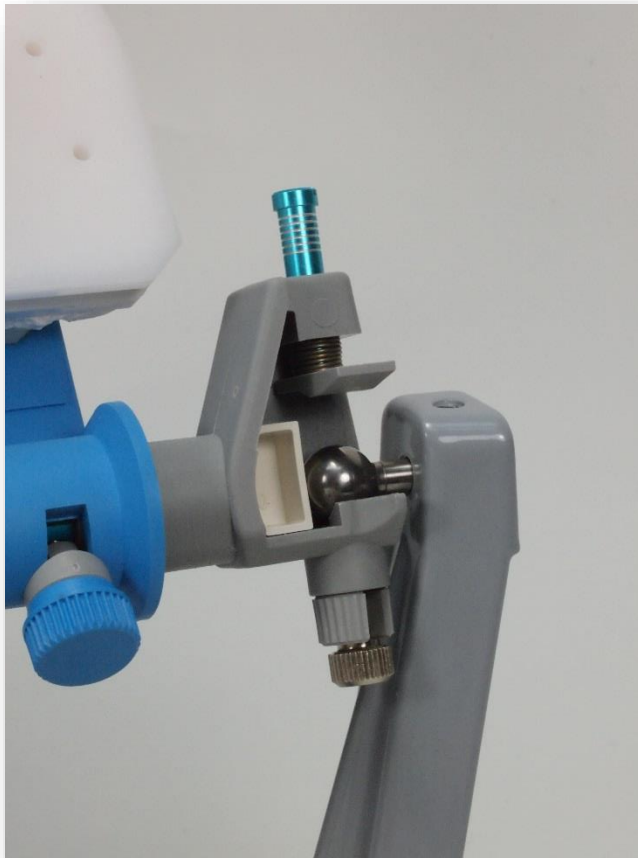
Smart Occlusion / Step n° 2



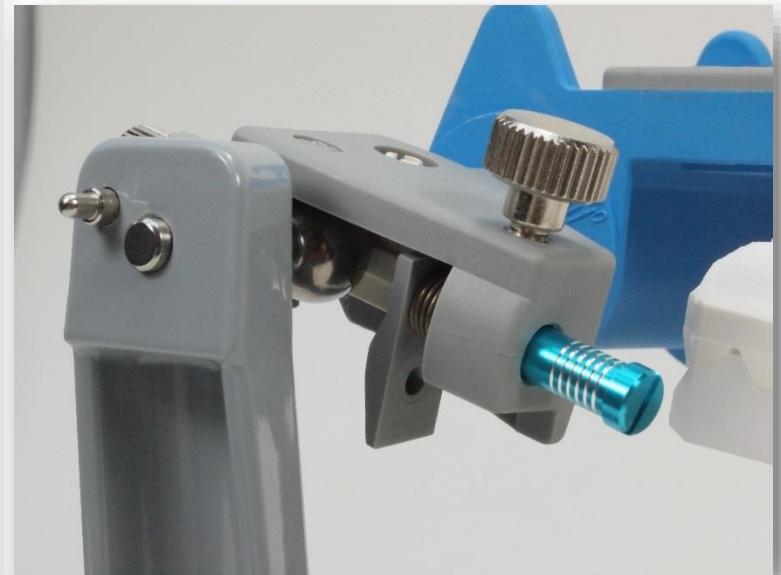
**Keep only the adjacent teeth of
the work to realise**



Smart Occlusion / Step n° 3

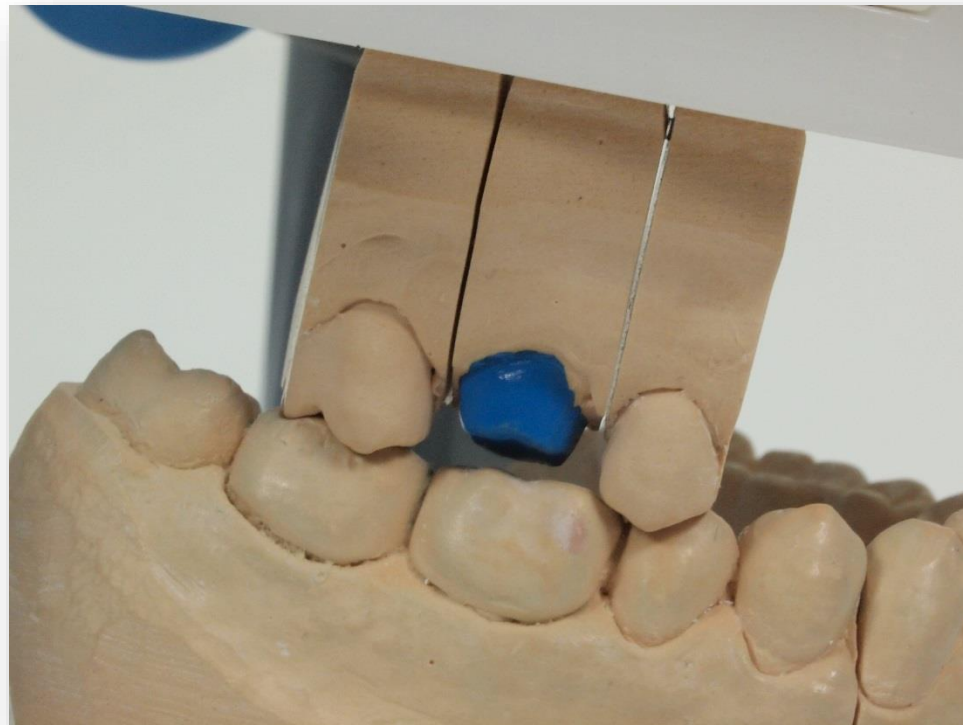


Release the condylar boxes



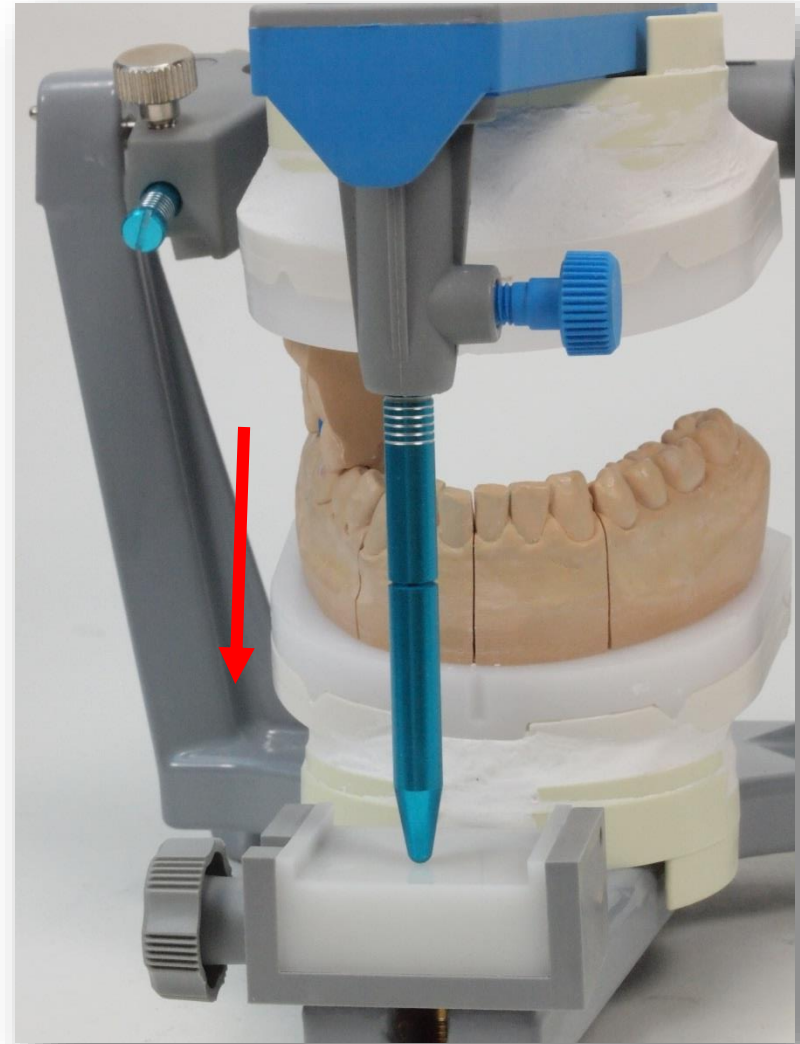
Smart Occlusion / Step n° 4

Put the models in maximal intercuspitation



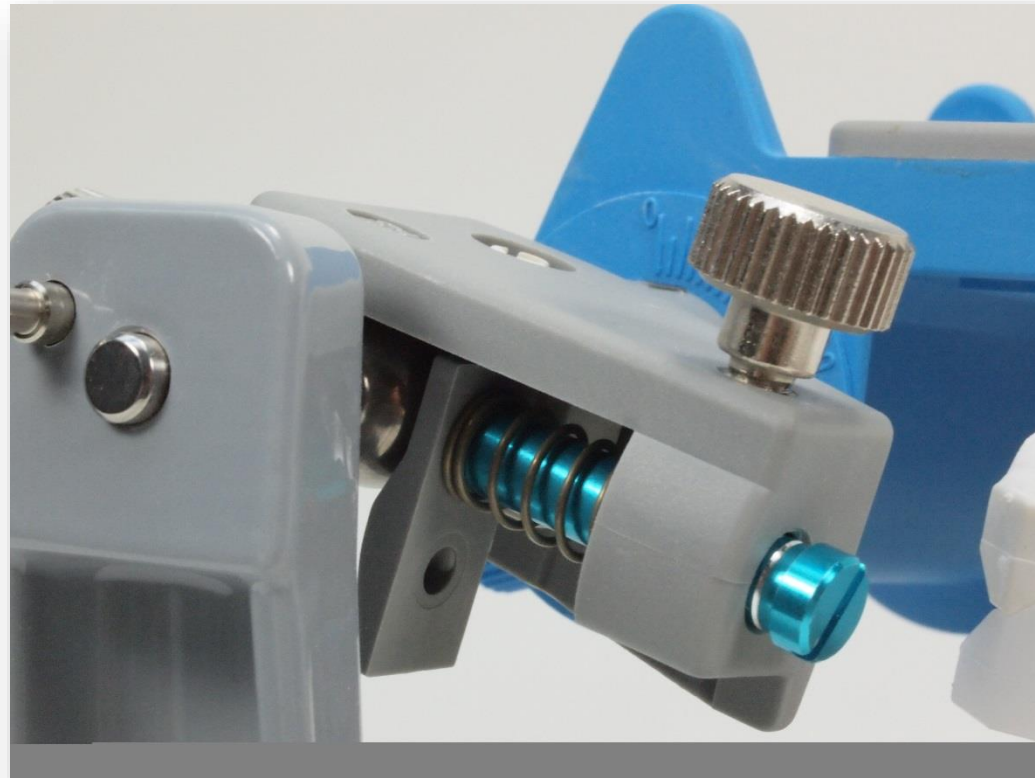
Smart Occlusion / Step n° 5

Release the incisal rod



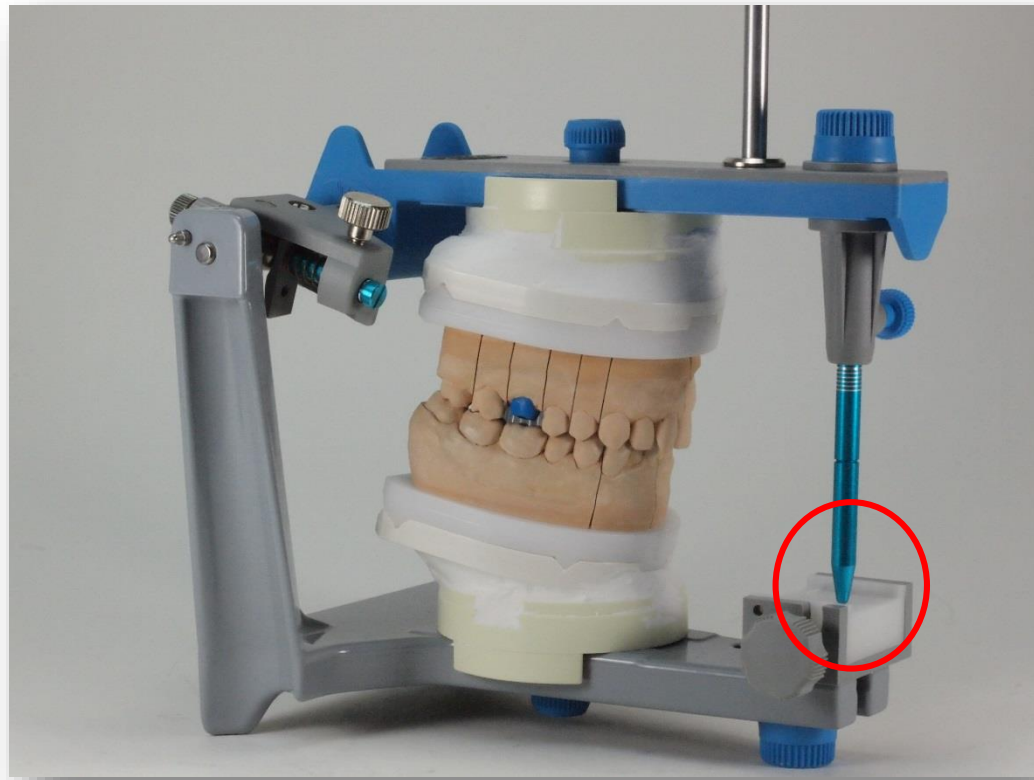
Smart Occlusion / Step n° 6

Close the condylar boxes



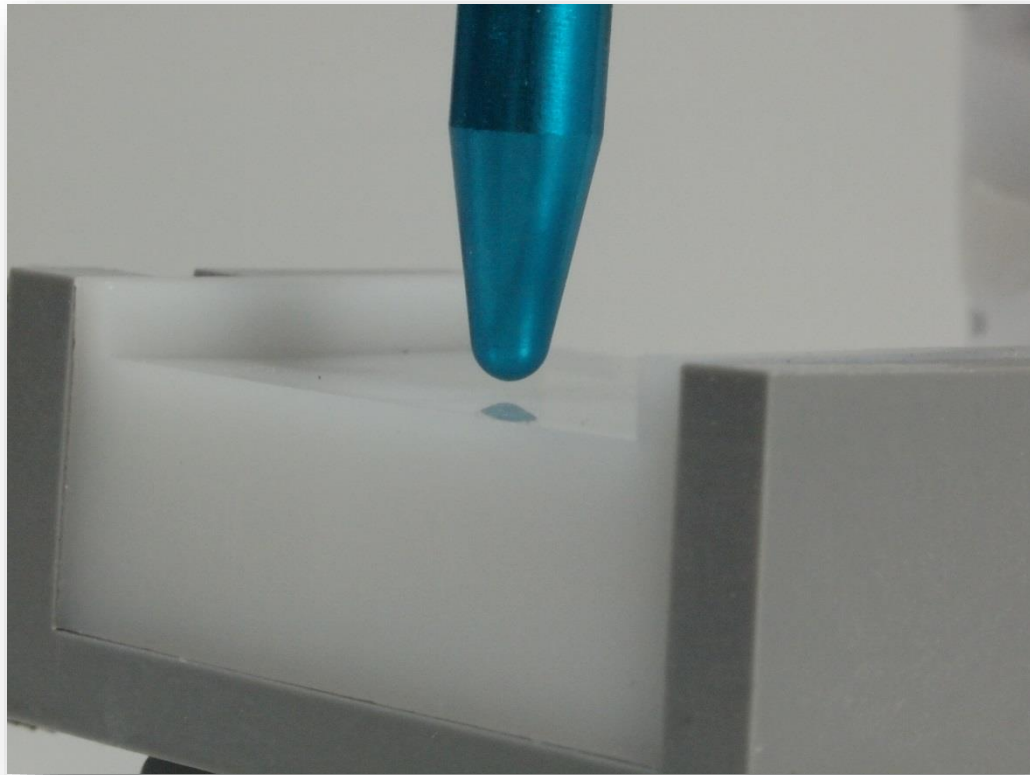
Smart Occlusion / Step n° 7

Put back the dies onto the model



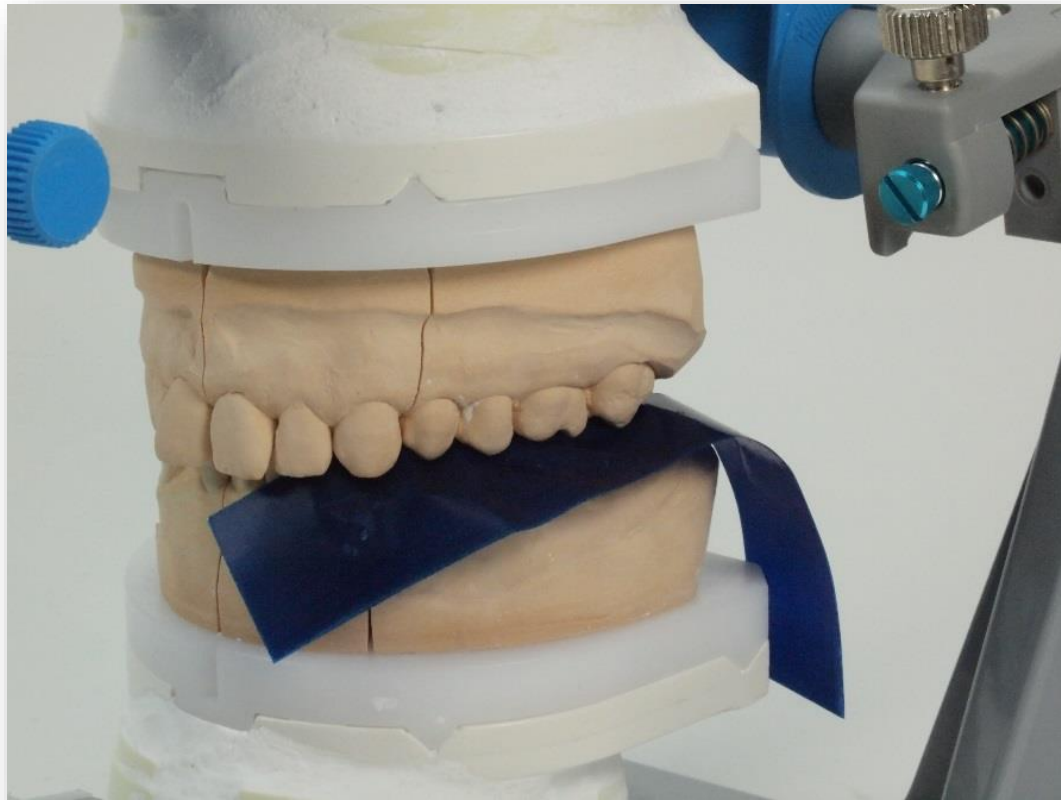
Smart Occlusion / Step n° 8

Incisal rod is no more in contact with the table !!!



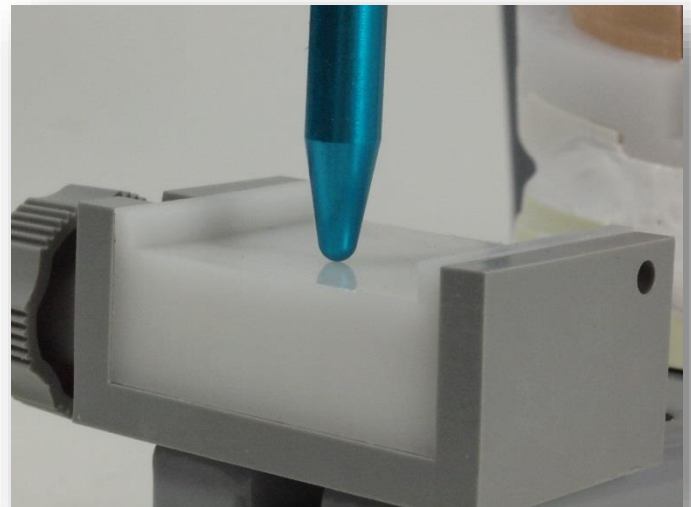
Smart Occlusion / Step n° 9

Use articulating paper (40 μ)



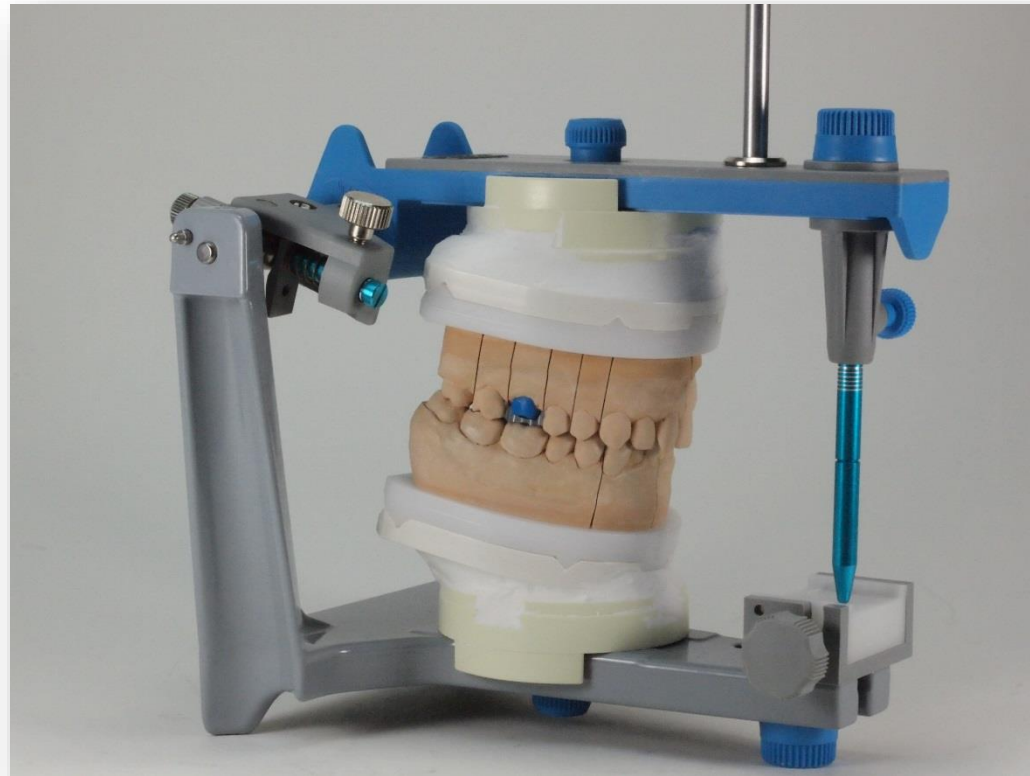
Smart Occlusion / Step n° 10

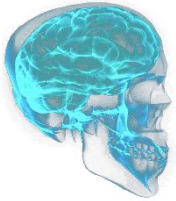
Remove the material in excess till the rod get in contact with the table



Smart Occlusion

Your models are now in maximal intercuspitation





NO MORE :



Additional expenses

Unhappy patients

Unhappy dentists

Unhappy technicians