



Operation Guide

TOKUYAMA REBASE III

1 Removal of the dentures surface

2 Application of ADHESIVE and dry

Note: Use primer to Metal surface

Precious Metal

Non Precious Metal

●TOKUYAMA UNIVERSAL BOND
(Sold separately)

3 From mixing to polishing (Standard treatment time)

<Cases of Undercut or Partial Denture>

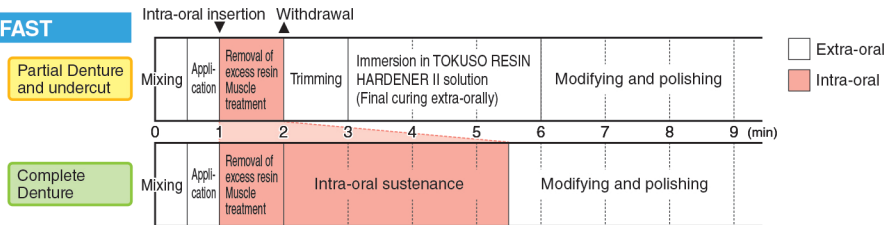
After muscle treatment, final cure extra-orally,
using TOKUSO RESIN HARDNER II
(If necessary, please trim it.)

<Cases of Complete Denture> (having no undercut)

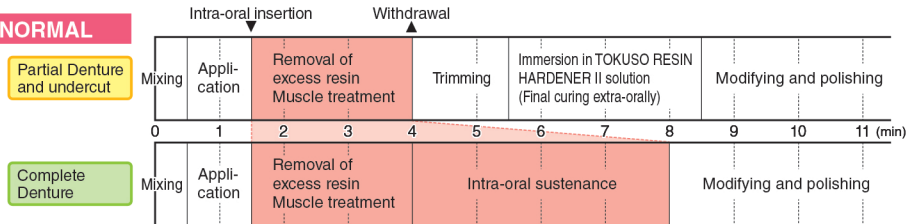
Keep the denture in the patient's mouth until final hardening is complete.
(If necessary, please trim it extra-orally and place the denture in the
patient's mouth again until final hardening is complete.)

Treatment time is shortened by a rise in body or room temperature and as the proportion of powder increases.

FAST



NORMAL



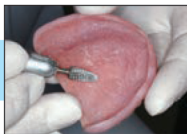
[Application of TOKUSO RESIN HARDENER II]

1 scoop of powder per 200mL of 40-60°C (104-140°F) water.
Immerse the denture for more than 3 minutes.

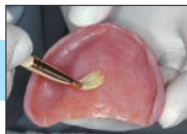
Direction for use



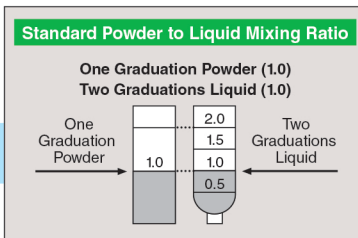
1) Checking the adaptation



2) Removal of the denture surface



3) Application of ADHESIVE, and dry it



4) Measuring

Tip

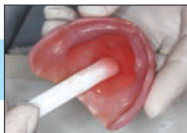
Guideline for measuring
Complete upper dentures :
on a scale from 1.5 ~ 2.0
Complete lower dentures :
on a scale from 1.0 ~ 1.5

Tip

If powder is added during mixing,
surface irregularities due to insufficient
mixing may occur. Before mixing,
measure the amount of liquid and
powder to be used.



5) Mixture
After powder and liquid
are dissolved, continue
mixing for 10 seconds.



6) Application of the resin

Tip

If thickness is needed for
the denture border, it is
easier to apply the resin
after the viscosity has risen.



7) Insertion of the Denture.
Removal of excess resin



8) Muscle Treatment

Partial denture and undercut

If the denture is a partial denture or
the patient has an undercut, residual
root, etc, remove the denture from the
mouth and trim it extra-orally prior to
final curing with TOKUSO RESIN
HARDENER II.* Otherwise the
denture may not be removed from the
mouth.

9) Final curing



10) After curing



11) Modifying and polishing



12) Checking the adaptation



13) Completion

*How to use TOKUSO RESIN HARDENER II



Dissolve 1 scoop of TOKUSO
RESIN HARDENER II per 200mL
of water(40-60°C (104-140°F))



Immerse the relined denture
into the solution for more than
3 minutes



Wash in water