



## WAX CARVING UNIT

# HOT 2 TOUCH

## USER AND MAINTENANCE MANUAL



### 1. DESCRIPTION

HOT 2 Touch is an electric waxing unit with electronic regulation, suitable for the modelling technique of the waxes most commonly used in the dental and goldsmith fields.

The unit easily attains and keeps the ideal melting temperature of the wax in use (extremely wide adjusting field ranging from 50° to 200°C) and is fitted with a double handpiece. Up to two temperature thresholds can be preset, and it is possible to

easily switch from one temperature to another just pressing the handpiece itself. This feature allows faster and practical work. Temperature control is ensured by a thermocouple sensor installed in the handpiece, in contact with the modelling tip.

For an easier use, two handpiece supports have been developed: one magnetic, located on the control unit, the other to be positioned on the workbench. Standard configuration includes a set of 6 modelling tips. The tools can be stored in the specific compartment or inserted into the holes on the housing.

These are the main advantages of using HOT 2 Touch:

- no danger related to open flame equipment
- considerable elimination of wax fumes
- no risk of gas loss
- possibility to preset and store in memory two working temperatures
- instant switch from one temperature to another – directly on the handpiece
- similar working conditions as if handling with a traditional spatula warmed up on a bunsen burner.


## 2. TECHNICAL SPECIFICATIONS

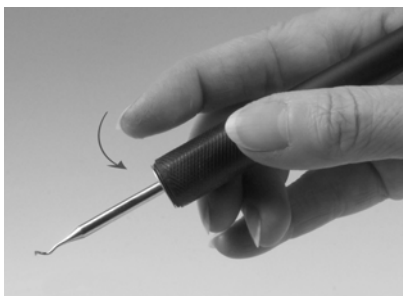
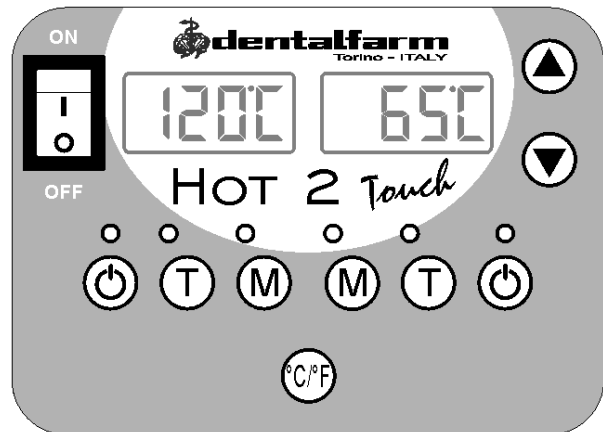
Description	
Control unit – length	150 mm
Control unit – width	120 mm
Control unit - height	75 mm
Net weight – Gross weight	1,0 kg – 1,3 kg
Network tension	230 v AC – 50/60 Hz
Working tension	24 v AC
Fuse	1.0 A
Absorption	9 W – 0.3 A
Working temperatures	2 from 50°C to 200°C
Handpieces	2 - independent

## 3. INSTALLATION INSTRUCTIONS

- Plug the handpiece cable into the connectors located on the front of the control unit.
- Position the handpiece supports according to your preferences.
- Put the modelling tips in place
- Connect the supply cable into a certified plug and verify that the network tension corresponds with the data shown on the label.

## 4. INSTRUCTIONS FOR USE

- Switch on the main shutter; both displays and both LEDs corresponding to the TOUCH option will turn on (T).
- Press the start key , The display will show the lower temperature kept in memory.
- If you wish to change the degree scale (°C or °F), press the correspondent key (D) to change it.
- To display the second preset temperature, press **M** button., the displayed value expresses the difference, in degrees, between the two temperatures.
- If you wish to modify some data, press **▲** to increase or **▼** to decrease the value (ATTENTION! The workplace for which modifications can be made is the one indicated by the blinking LED (corresponding to the START key. To change temperature on the other workplace, first of all press the corresponding start key.

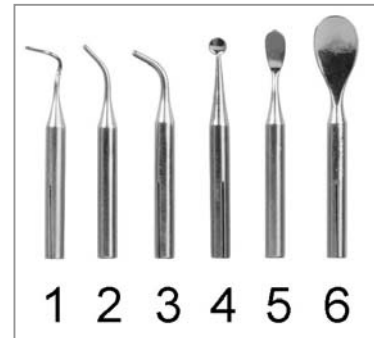


- To switch from one temperature to another, it will be sufficient to touch the metal ring located on top of the handpiece.
- Choose the modelling tool and insert it on the tip (use pliers to avoid any scalds) and ensure that it properly fits its anti-rotative seat.

- Always position the handpiece on one of the specific holders (magnetic or movable).
- When the equipment is switched off, all preset data will be stored in memory.

The following modelling tools are supplied with the unit

- 1 - **6003002** small curved cone-shaped probe
- 2 - **6003004** medium curved cone-shaped probe
- 3 - **6003005** large curved cone-shaped probe
- 4 - **6003006** small rounded tip
- 5 - **6003007** medium spatula
- 6 - **6003008** wax spoon



For carrying out milling operations, by mounting the waxing unit on Dentalfarm surveyors, a further set of instruments (code **6003009**) is available.

This set includes 4 tools (from left to right):

- 6003013** 6° probe
- 6003012** 4° probe
- 6003011** 2° probe
- 6003010** cylindrical probe



## 5. INSTALLATION ON DENTALFARM SURVEYORS

In order to use the waxing unit, under orthogonality conditions, together with a surveyor, it will be necessary to have a specific adapter.



For manual surveyors A – B or C (image on the right), you will need the adapter with code **6003015**, which is to be screwed on the shaft rod, at the place of the hexagonal plier closing ring-nut.

On the other hand, in case the instrument is an iso-surveyor (ISO), the illustrated adapter item code **6003014** is necessary, which winds up the final part of the handpiece and is to be locked by the pliers.

Naturalmente, posizionando il manipolo sul fondo dell'adattatore, non è più possibile usufruire della funzione di commutazione veloce delle temperature.



## 6. MAINTENANCE

**⚠**  
**ATTENTION:**

Before carrying out any maintenance operation on any connection inside the machine, disconnect the plug from the socket; in this way the unit will be completely cut off.

In case of any doubts, difficulties or possibility of mistake, contact our Technical Service to avoid any risk or damage.

### **Cleaning of the tips**

We recommend to keep the tips clean from any wax residuals; gently wipe only when the tip is cold.

### **Cleaning of the unit**

Dust with a soft cloth, do not use water to avoid any damage to the electric installation and deriving risks; do not use any additive products or solvents which may spoil the plastic surface.

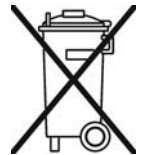
## **7. TECHNICAL REFERENCE REGULATIONS AND TEST PROCEDURES**

The electronic waxing units of the HOT range are mass-manufactured by DENTALFARM in compliance with technical and safety rules in force, as provided for by the 2006/42 CEE Community Directive on Machinery.

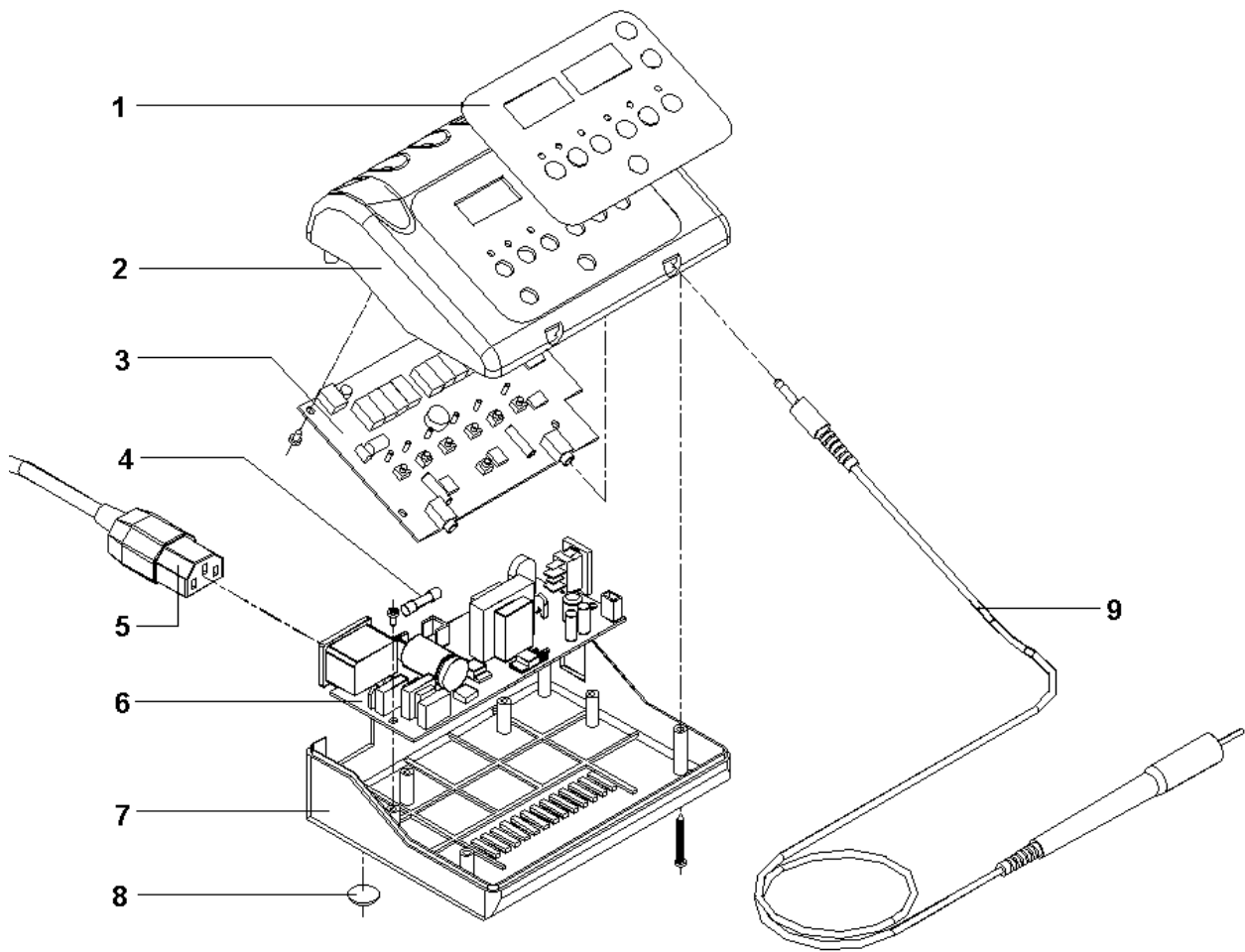
Careful inspection and full routine testing is carried out singularly on each machine which is further tested by an automatic test installation assuring compliance with the fixed limits.

## **8. DEMOLITION AND WASTE DISPOSAL**

According to international regulations, this unit has been classified as AEE (electric and electronic device, whose correct operation depends on electric currents and electromagnetic fields) and as a consequence, at the end of its lifetime, it can not be treated as normal waste material but it must be disposed separately, complying with the Directive 2002/96/CE.

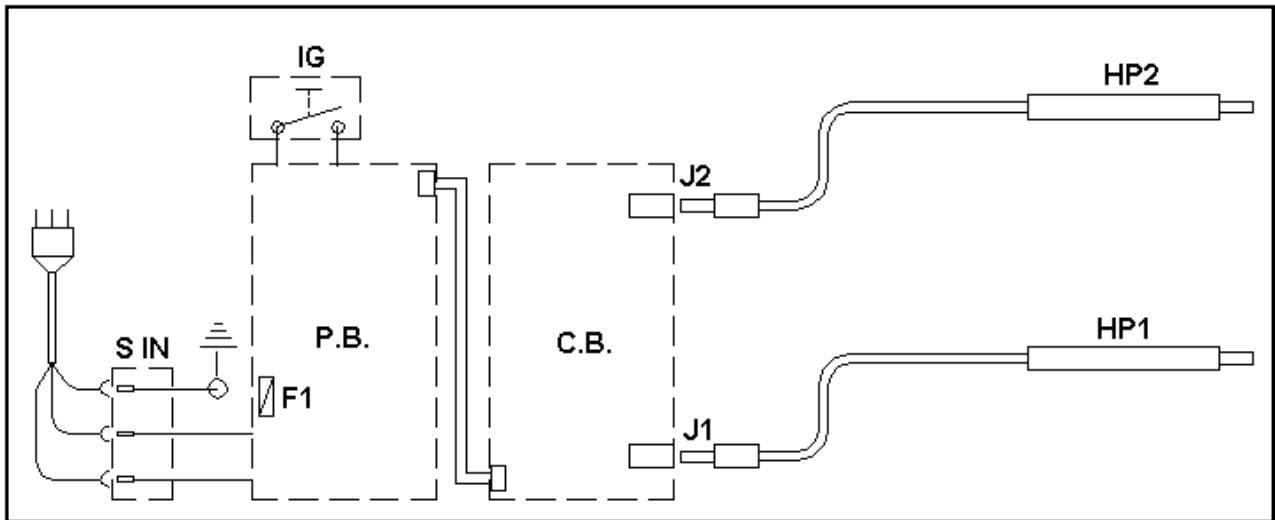


## 9. EXPLODED DRAWING AND SPARE PART LIST



No.	CODE	DESCRIPTION
1	6003020T	Brand label
2	6003022D	Upper shell
3	6003024T	Control board with keyboard and display
4	NEA070	Fuse
5	NEV013	Power cord with plug and socket
6	6003023T	Power board
7	6003021D	Lower shell
8	---	Rubber feet
9	6003016T	Complete handpiece

## 10. WIRING DIAGRAM



REF.	DESCRIPTION
<b>S IN</b>	Plug and fuseholder unit
<b>IG</b>	Main switch
<b>P.B.</b>	Electronic board
<b>F1</b>	Fuse
<b>C.B.</b>	Control board
<b>J1-2</b>	Connector 1 or 2
<b>PH-2</b>	Mandpiece with heating element and thermocouple 1 or 2

### **DENTAFARM s.r.l.**

Via Susa, 9/a - 10138 TORINO - ITALY

**☎ TECHNICAL COMMERCIAL SERVICE - (+39) 011/4346588**

**☎ TECHNICAL SUPPORT - 011/4346632**

**📠 FAX 011/ 4346366**

**E-mail: [info@dentalfarm.it](mailto:info@dentalfarm.it)**

**Website: [www.dentalfarm.it](http://www.dentalfarm.it)**