



WAX CARVING UNIT

HOT 2 PLUS



USER AND MAINTENANCE MANUAL



1. DESCRIPTION

HOT 2 Plus is an electric waxing unit with electronic regulation, suitable for the modelling technique of the waxes most commonly used in the dental and goldsmith fields.

The unit easily attains and keeps the ideal melting temperature of the wax in use (extremely wide adjusting field ranging from 50° to 200°C) and is fitted with a double handpiece. Both users are completely independent. Up to two temperature thresholds can be set, thus allowing the user to work

with two different wax products, by recalling the preset temperature.

Temperature control is ensured by a thermocouple sensor installed in the handpiece, in contact with the modelling tip.

Standard configuration includes 6 modelling tips, which can be stored in the practical rear compartment or inserted into the holes on the housing. The handpieces can be positioned on the movable bench-top holders.

These are the main advantages of using HOT 2 Plus:

- no danger related to open flame equipment
- considerable elimination of wax fumes
- no risk of gas loss
- precise control over the modelling temperature

2. TECHNICAL SPECIFICATIONS

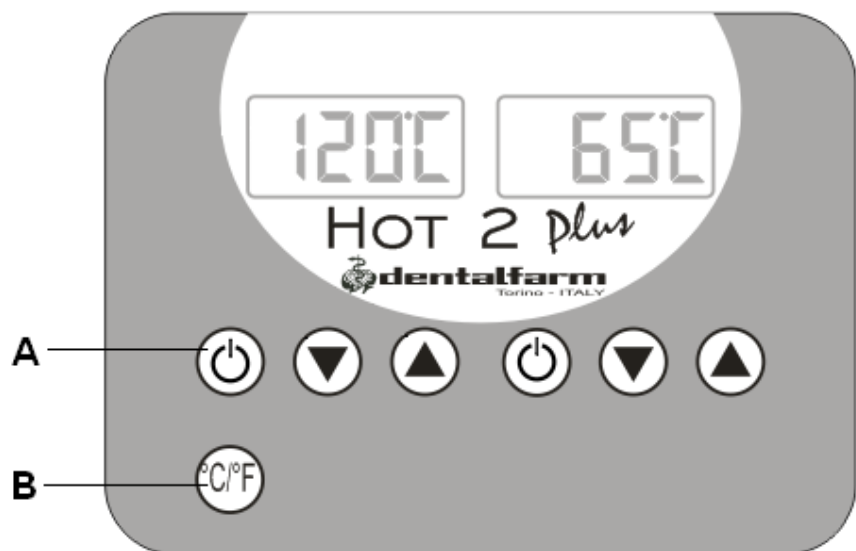
Description	
Control unit – length	155 mm
Control unit – width	160 mm
Control unit - height	75 mm
Net weight – Gross weight	0,8 kg – 0,95 kg
Network tension	230 v AC – 50/60 Hz
Working tension	24 v AC
Fuse	2.0 A
Absorption	20 W – 1.2 A
Working temperatures	from 50°C to 200°C
Handpieces	2- independent

3. INSTALLATION INSTRUCTIONS

- Plug the handpiece cables into the connectors located on the front of the control unit.
- Position the handpiece supports according to your preferences.
- Put the modelling tips in place
- Connect the supply cable into a certified plug and verify that the network tension corresponds with the data shown on the label.

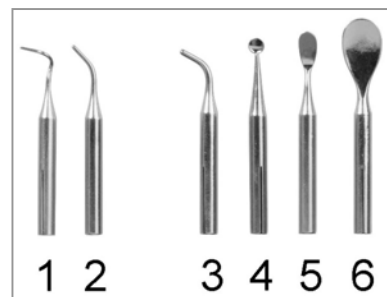
4. INSTRUCTIONS FOR USE

- Switch on the main shutter; both displays (B and C) will turn on and OFF will be displayed.
- Press the start key (A for the handpiece, right or left)
- If you wish to change the degree scale (°C or °F), press the correspondent key (B) to change it.
- If the preset temperature is not correct, use keys ▲ to increase its value, or ▼ to decrease it.
- Choose the modelling tool and insert it on the tip (use pliers to avoid any scalds) and ensure that it properly fits its anti-rotative seat.
- Always position the handpiece on one of the specific holders (magnetic or movable).
- When the equipment is switched off, preset data will be stored in memory.



The following modelling tools are supplied with the unit

- 1 - **6003002** small curved cone-shaped probe
- 2 - **6003004** medium curved cone-shaped probe
- 3 - **6003005** large curved cone-shaped probe
- 4 - **6003006** small rounded tip
- 5 - **6003007** medium spatula
- 6 - **6003008** wax spoon



For carrying out milling operations, by mounting the waxing unit on Dentalfarm surveyors, a further set of instruments (code **6003009**) is available. This set includes 4 tools (from left to right):

- 6003013** 6° probe
- 6003012** 4° probe
- 6003011** 2° probe
- 6003010** cylindrical probe



5. INSTALLATION ON DENTALFARM SURVEYORS

In order to use the waxing unit, under orthogonality conditions, together with a surveyor, it will be necessary to have a specific adapter.



For manual surveyors A – B or C (image on the right), you will need the adapter with code **6003015**, which is to be screwed on the shaft rod, at the place of the hexagonal plier closing ring-nut.



On the other hand, in case the instrument is an iso-surveyor (ISO), the illustrated adapter item code **6003014** is necessary, which winds up the final part of the handpiece and is to be locked by the pliers.

6. MAINTENANCE


ATTENTION:

Before carrying out any maintenance operation on any connection inside the machine, disconnect the plug from the socket; in this way the unit will be completely cut off.

In case of any doubts, difficulties or possibility of mistake, contact our Technical Service to avoid any risk or damage.

Cleaning of the tips

We recommend to keep the tips clean from any wax residuals; gently wipe only when the tip is cold.

Cleaning of the unit

Dust with a soft cloth, do not use water to avoid any damage to the electric installation and deriving risks; do not use any additive products or solvents which may spoil the plastic surface.

7. TECHNICAL REFERENCE REGULATIONS AND TEST PROCEDURES

The electronic waxing units of the HOT range are mass-manufactured by DENTALFARM in compliance with technical and safety rules in force, as provided for by the 2006/42 CEE Community Directive on Machinery.

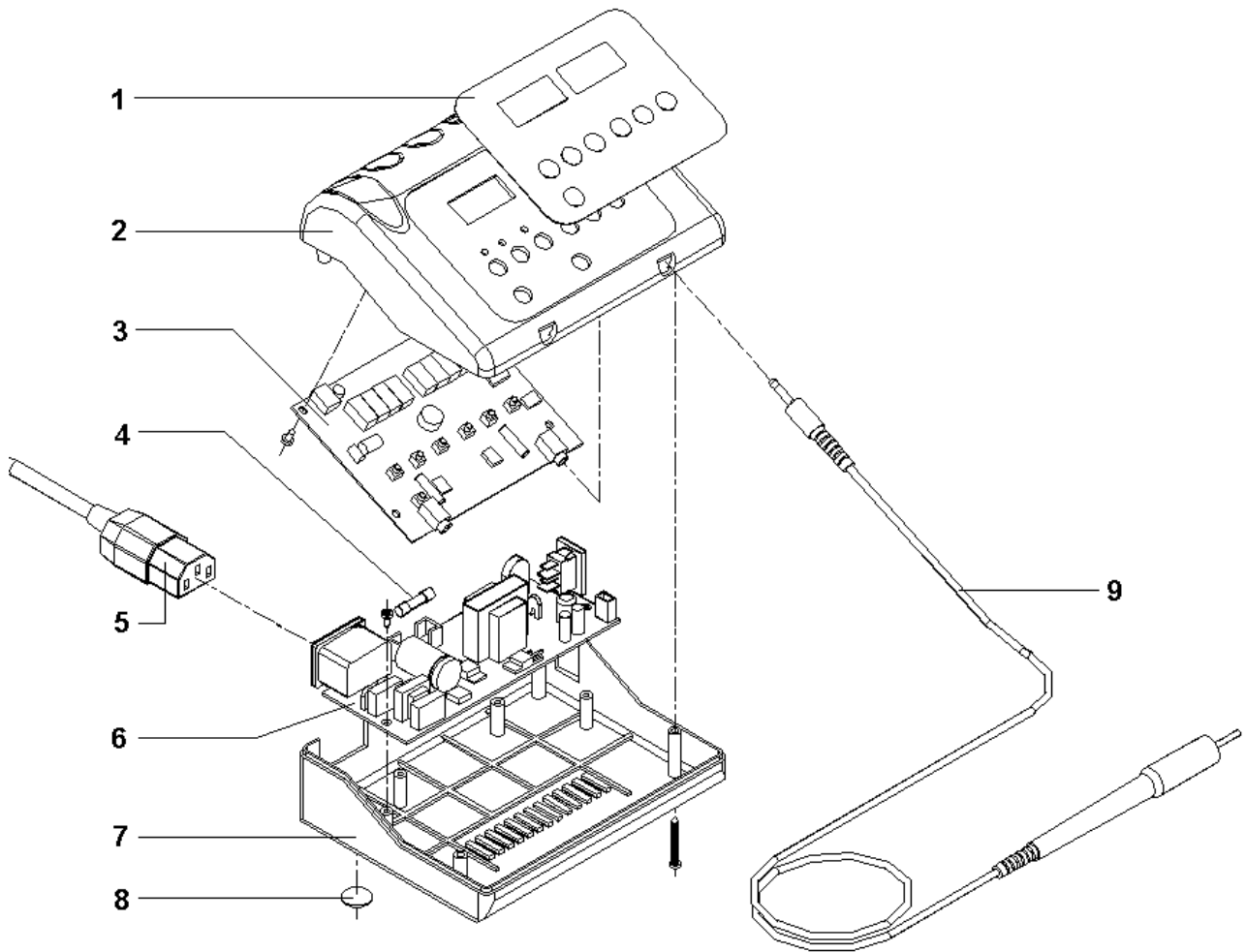
Careful inspection and full routine testing is carried out singularly on each machine which is further tested by an automatic test installation assuring compliance with the fixed limits.

8. DEMOLITION AND WASTE DISPOSAL

According to international regulations, this unit has been classified as AEE (electric and electronic device, whose correct operation depends on electric currents and electromagnetic fields) and as a consequence, at the end of its lifetime, it can not be treated as normal waste material but it must be disposed separately, complying with the Directive 2002/96/CE.

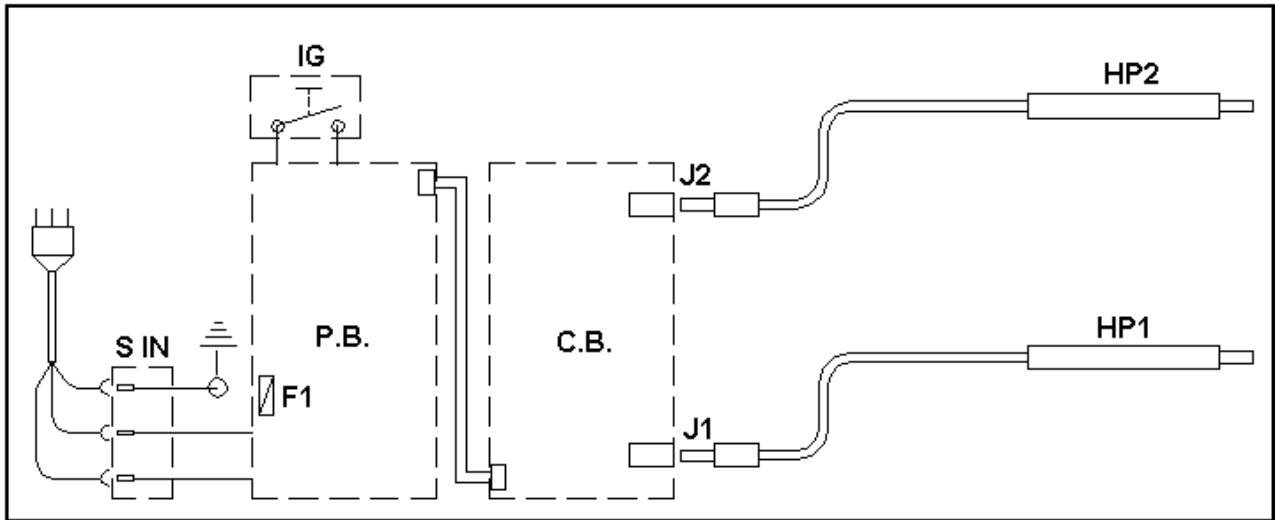


9. EXPLODED DRAWING AND SPARE PART LIST



No.	CODE	DESCRIPTION
1	6003020D	Brand label
2	6003022D	Upper shell
3	6003024D	Control board with keyboard and display
4	NEA070	Fuse
5	NEV013	Power cord with plug and socket
6	6003023D	Power board
7	6003021D	Lower shell
8	---	Rubber feet
9	6003016	Complete handpiece

10. WIRING DIAGRAM



REF.	DESCRIPTION
S IN	Plug and fuseholder unit
IG	Main switch
P.B.	Power board
F1	Fuse
C.B.	Control board
J1-2	Connector 1 or 2
PH-2	Mandpiece with heating element and thermocouple 1 or 2

DENTALFARM s.r.l.

Via Susa, 9/a - 10138 TORINO - ITALY

☎ TECHNICAL COMMERCIAL SERVICE - (+39) 011/4346588

☎ TECHNICAL SUPPORT - 011/4346632

📠 FAX 011/ 4346366

E-mail: info@dentalfarm.it

Website: www.dentalfarm.it