

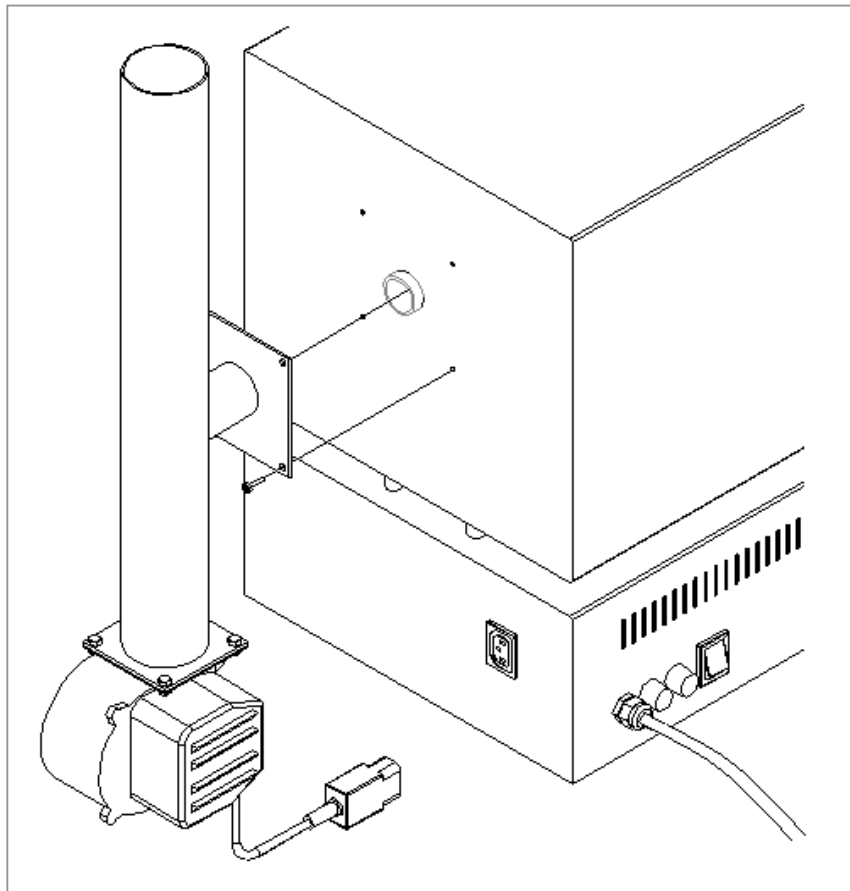


**FUME EXHAUST FAN
FOR BURN-OUT FURNACES MOD. CF-2**



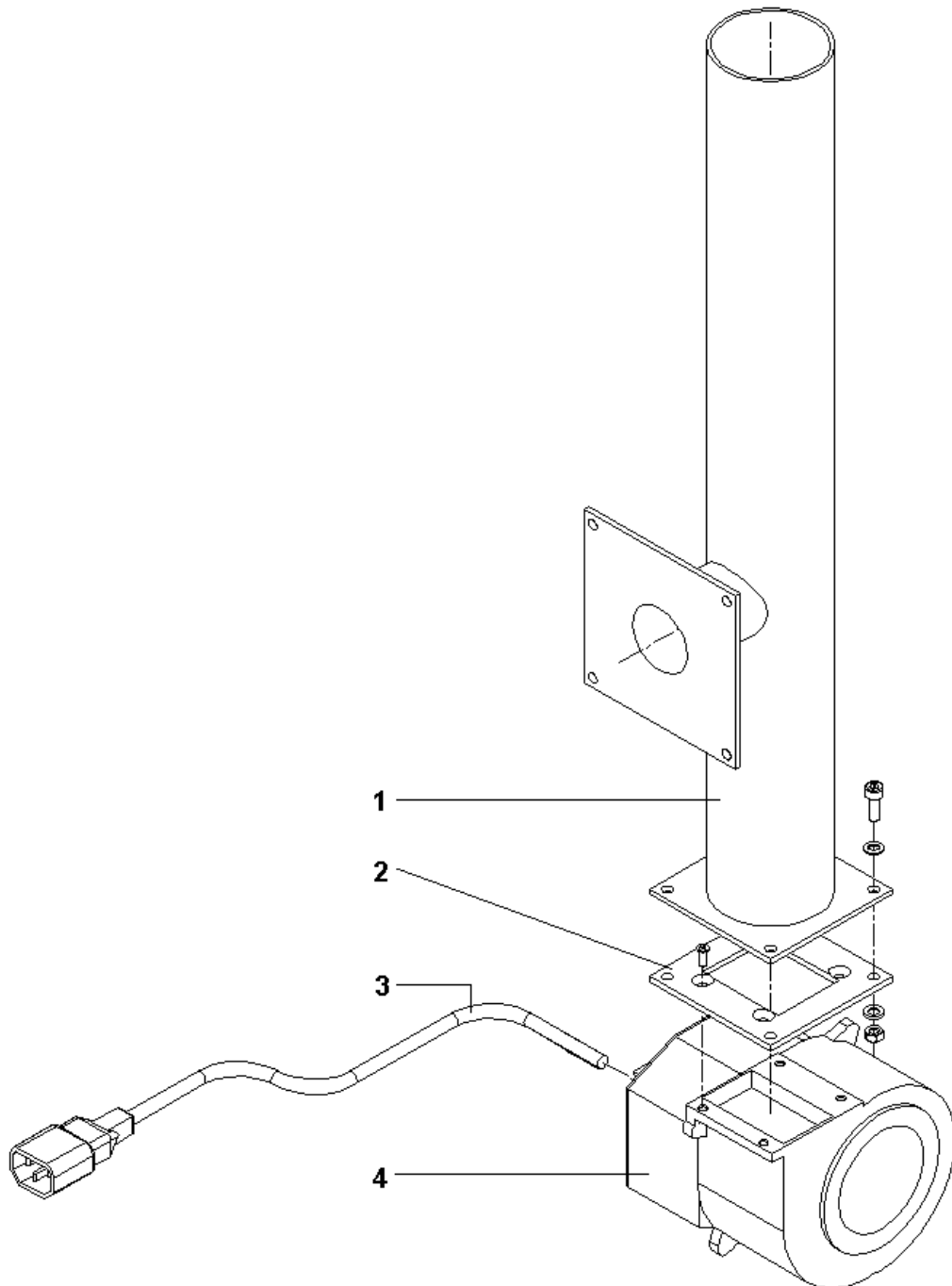
INSTALLATION

1. Insert the horizontal pipe on the manifold protruding from the rear wall of the furnace and fix in place by means of the four self-threading screws previously loosened (use a cross-section screwdriver).
2. Connect the plug of the feeding cable to the socket at the bottom of the furnace, thus allowing the software system to start or stop automatically according to the preset temperatures.
3. Eventually extend the pipe by means of flexible elements connecting it outwards (the extension pipe is $\varnothing 60$).

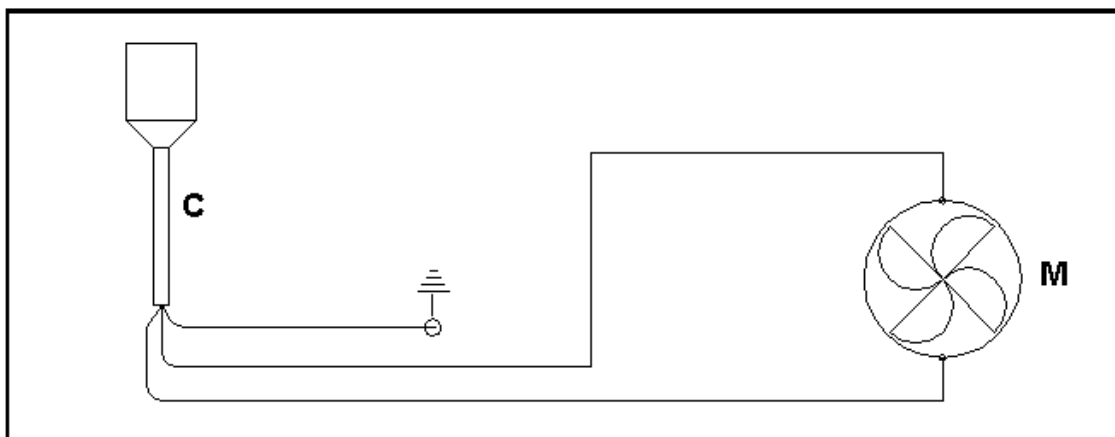


EXPLODED DRAWING AND SPARE PART LIST

No.	ITEM	DESCRIPTION
1	1211001	Exhaust pipe
2	1211002	Connection plate
3	1211003	Centrifugal fan
4	1211004	Cable with socket



WIRING DIAGRAM



POS.	DESCRIZIONE
C	Cable with socket
M	Motor

DENTALFARM s.r.l.

Via Susa, 9/a - 10138 TORINO - ITALY

 **TECHNICAL-COMMERCIAL SERVICE - (+39) 011/4346588**

 **AFTER-SALE ASSISTANCE - (+39) 011/4346632**

 **FAX 011/ 4346366 – Email: info@dentalfarm.it**

Website: **www.dentalfarm.it**