

www.pidental.hu



Silvercast[®]

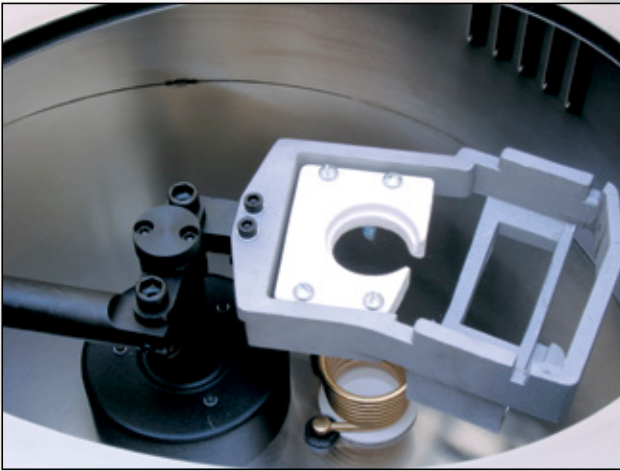
Medium frequency induction casting machine



The best quality at reasonable prices

Pi dental Manufacturing Co. Ltd.

■ Order code: 10-0000 "C"



Container system

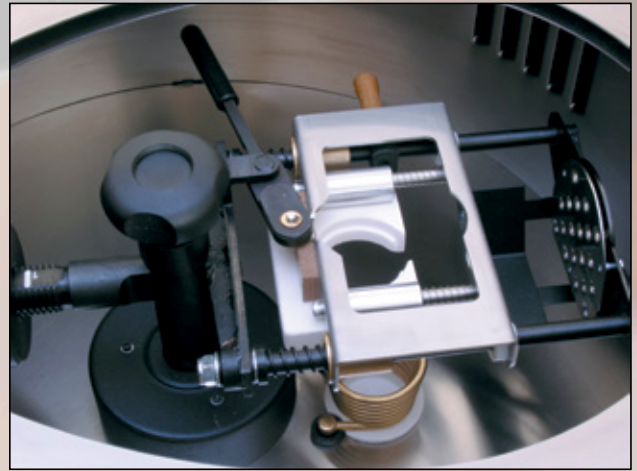
character "C" in order code

- No need to balance the centrifugal arm for each casting cycle
- The balancing is carried out automatically by using the standard rings and containers
- Very fast and cost-effective solution for large laboratories with continuous, standard size works

Accessories included:

- Plastic Mould rings "Pi dental"
(1 set = 4 sizes) Order No.: 10-9800
- Containers for Plastic mould rings "Pi dental"
(1 set = 4 sizes) Order No.: 10-9700
- Ceramic melting crucible (1 piece)
Order No.: 19-3000

■ Order code: 10-0000 "A"



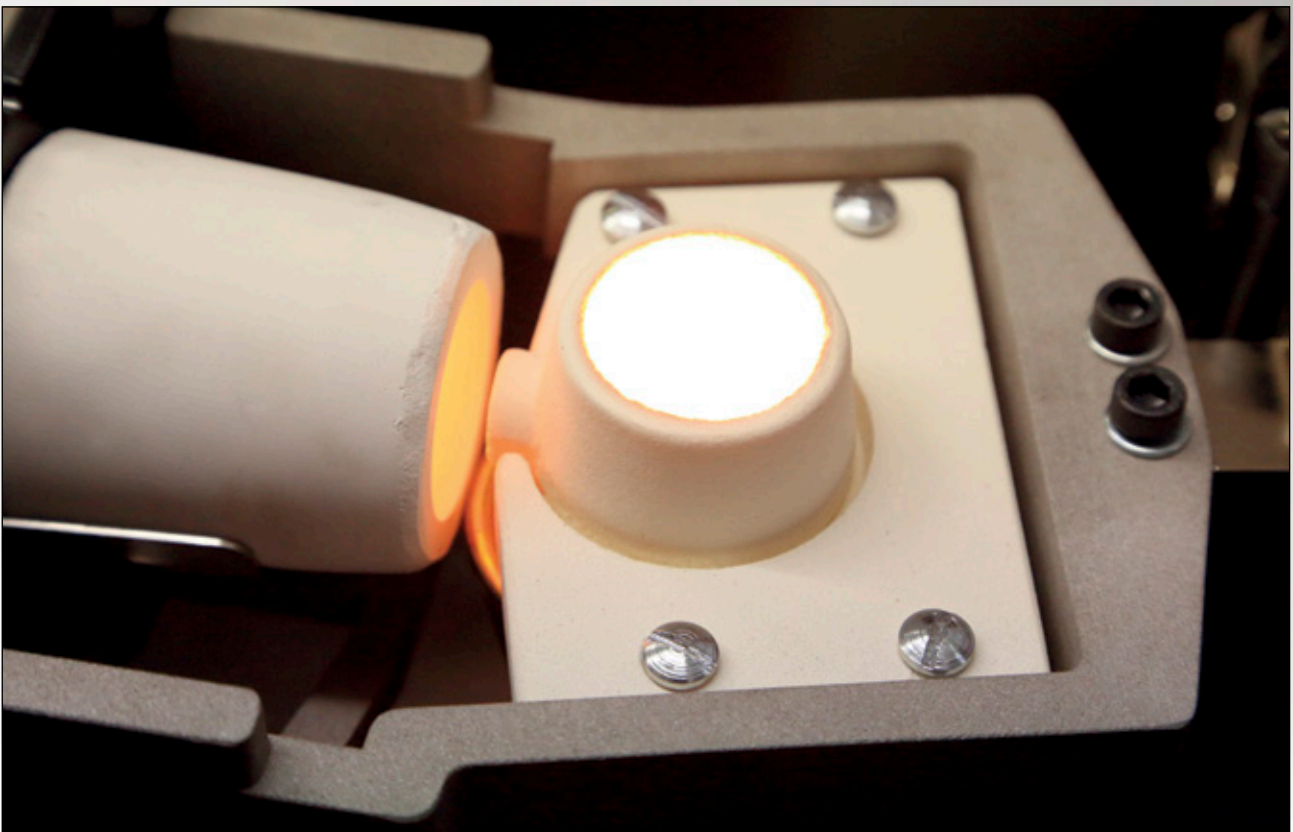
Adjustable centrifuge

character "A" in order code

- Every investments of any size and weight can be used
- Very well applicable in laboratories having more special work

Accessories included:

- Ceramic melting crucible (1 piece)
Order No.: 19-3000





Ceramic melting crucible
1 piece
■ Order No.: 19-3000



Plastic Mould rings "Pi dental"
1 set = 4 sizes of rings + plates
■ Order No.: 10-9800



Containers for plastic
mould rings "Pi dental"
1 set = 4 sizes
■ Order No.: 10-9700

Order optionally



Plastic mould rings by Dentaureum
1 set ■ No.: 10-9440

1 set included:

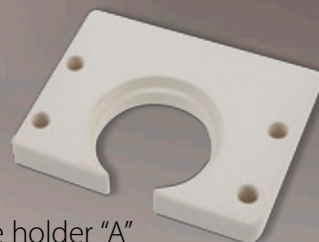
- 1pc. red ring ■ No.: 10-9450
- 1pc. blue ring ■ No.: 10-9460
- 1 pc. base ■ No.: 10-9400-02
- 1 pc. cone ■ No.: 10-9400-04



Containers for mould rings by
Dentaureum
1 set = 2 sizes
■ Order No.: 10-9600



Crucible holder "C"
■ Order No.: 10-9100-03



Crucible holder "A"
■ Order No.: 11-9320-00



Water cooling unit
■ Order No.: 19-1000



Mould tongs
■ Order No.: 19-2000



Graphite insert
■ Order No.: 19-4000

Technical data

Rated Voltage:	230V, 50/60 Hz	Height	360 mm
Special Voltages:	On Request	Width	565 mm
Current consumption:	approx. 16A	Depth	640 mm
Induction melting power:	2.6kW, 100kHz	Weight	65 kg
Water supply	Approx. 2 l/min		

Standard colours and Order codes:



- Green** ■ Order code: 10-0000 AGI
■ Order code: 10-0000 CGI



- Blue** ■ Order code: 10-0000 ABE
■ Order code: 10-0000 CBE



- Red** ■ Order code: 10-0000 ARD
■ Order code: 10-0000 CRD



- Black** ■ Order code: 10-0000 ABL
■ Order code: 10-0000 CBL

1st line, order with Adjustable centrifuge /character "A" in order code/
2nd line, order with Container system /character "C" in order code/

www.pidental.hu

2013 **Published with
the support of:**



HUNGARIAN
INVESTMENT AND
TRADE AGENCY



Pi dental Fogászati Gyártó Kft.

83-85 Szugló St. H-1141 Budapest, HUNGARY • Phone: (+36-1) 251 4944 • Fax: (+36-1) 251 4891
E-mail: sales.pidental@pidental.hu