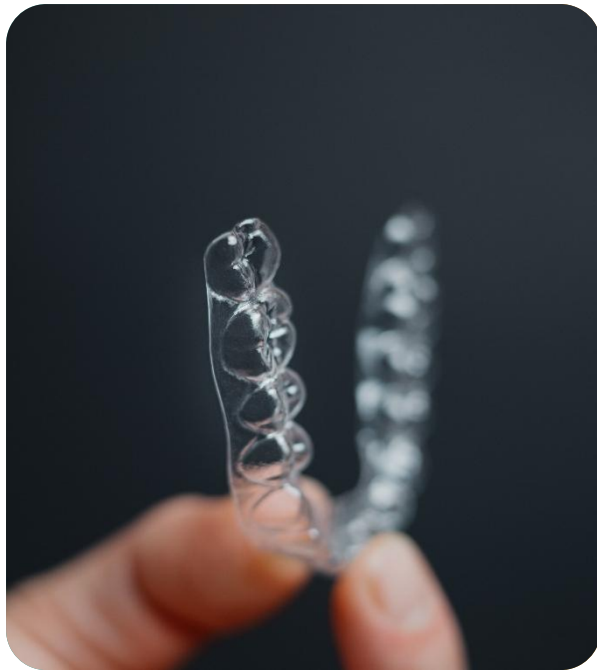
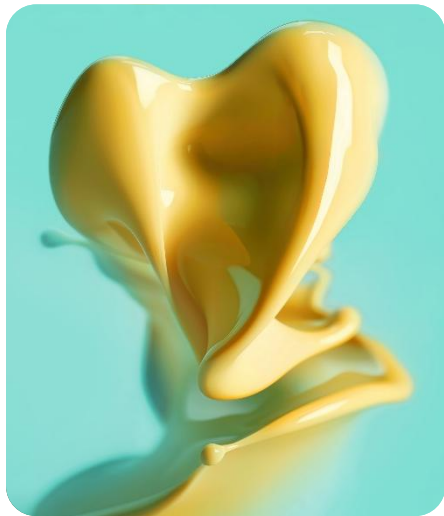




detax

Simply The Best
for direct-printed aligners
and retainers
dx direct aligner

February, 2026





Why dx direct aligner?

dx



Top Mechanical Performance

The perfect balance of strength and flexibility ensures optimal results in aligner therapy.



Self-directed Therapy

The therapy can begin at the first patient contact. Flexible and controlled process steps lead to shorter treatment times.



High Biocompatibility

Low solubility values ensure that biocompatible properties remain unaffected.



Design Flexibility

Custom-fit aligners, adapted to the individual tooth geometry, enable efficient and controlled tooth movements.

dx direct aligner

Medical resin for direct printing of aligners & retainers



Medical device
Class IIa



KEY FACTS

Why dx direct aligner?



Biocompatibility

- Low solubility values
- MDR certified, Medical Device Class IIa
- TPO-free



Effortless Workflow

- Compatible with the standard 3D printing process
- Seamless lab integration
- No extra process steps



Outstanding Mechanical Properties

- Optimal balance of strength and flexibility
- Ultra thin from 0,5 mm
- Perfectly tailored to the requirements of aligner therapy



Design Flexibility

- Variable and controlled thickness in defined areas for more effective tooth movements
- Customizable trimline for personalized fit



Self-directed Therapy Planning

- Immediate start of therapy at first patient contact
- Fast adaption of therapy planning possible
- Controlled orthodontic force



Premium Esthetics

- High transparency for nearly invisible aligners
- Minimal discoloration due to low water absorption

Why direct 3D printing of aligners?

Direct Printing

No thermoforming, no models
→ less waste, higher efficiency

Variability

Variable aligner thickness in defined zones → orthodontic force precisely tailored to treatment needs

Design Flexibility

Precise fit of the aligner, adapted to the individual tooth geometry → more effective tooth movements

Immediate Start

The therapy can begin at the first patient contact → shorter treatment times

Gentle Therapy

Stepwise, controlled tooth-moving force → less pain, gentler treatment for the patient

Process Reliability

Fully digital workflow, from planning to printing → fewer manual steps

Simply The Best · dx direct aligner

dx

Biocompatibility



- Low solubility values
- MDR certified, Medical Device Class IIa
- TPO-free

Mechanical Stability



- Optimal balance of strength and flexibility
- Outstanding material stability allows increased force by controlled thickness

Maximum Comfort



- Gentle orthodontic force at the start
- Reduced pain and discomfort

Resource-Saving



- Optimal material properties enhance therapy effectiveness, reducing the number of aligners required

Wide application range



- Reduced amount of attachments due to high mechanical stability

No discoloration



- Long-term color stability due to low water absorption

dx direct aligner

Medical resin for direct printing of aligners & retainers



Medical device
Class IIa



Ordering information

dx direct aligner

04707 Bottle, 1.000 g

04706 Eco Bag, 5 kg

Customer Experiences

Real experiences. Real insights. Real value.



*"A New Standard for Orthodontics.
The final takeaway of this transition is
that Asiga UltraGLOSS Lift tray/Detax
direct aligner combination is not merely
a competitor to other workflows, resins,
or printers. It is a replacement for an
entire era of manufacturing."*

"

Matthias Zimmerer

CDT | Dental Technology Expert
exocad Certified Trainer



Validation Matrix dx 3D Resins



dx validation printer matrix (385 nm)



ASIGA

Max	●	●	●	●	●	●	●	●	●	●	●	●	●	●	●	●	●	●	●
Max2	●	●	●	●	●	●	●	●	●	●	●	●	●	●	●	●	●	●	●
Ultra	●	●	●	●	●	●	◐	●	●	●	●	●	●	●	●	●	●	●	●
Pico2	●				●	●				●	●				●	●			●
PRO2	●				●	●				●	●				●	●			●
PRO4K	●	●	●	●	●	●	◐	●	●	●	●	●	●	●	●	●	●	●	●

rapidshape

ONE		●	●	●	●		◐	●	●										●
Pro20	●	●	●	●	●	●	◐	●	●	●	●	●	●		●	●	●	●	●
Pro30	●	●	●	●	●	●		●	●	●	●	●	●		●	●	●	●	●
D10/D20 Series	●	●	●	●	●	●		●	●	●	●	●	●		●	●	●	●	●
D30/D40 Series	●	●	●	●	●	●		●	●	●	●	●	●		●	●	●	●	●
D50+ Series	●	●	●	◐	◐	◐		●	◐	◐	◐		◐		◐	◐	◐	◐	◐
D70/D90 Series				●	●						●				●				

straumann

P Series	●	●	●	●	●	●		●	●	●	●	●	●		●	●	●	●	●
----------	---	---	---	---	---	---	--	---	---	---	---	---	---	--	---	---	---	---	---

Qualification ● validated ◐ in process

dx validation printer matrix (385 nm)



ivoclar

PrograPrint PR5

MICROLAY

Versus

Glidewell

Fastprint.io

LuxCreo

iLux Pro Dental

MICRAFT

Prime/Hyper Series

Ultra Series

Alpha

HEYGEARS

A2D

A2DHD

A3D

Chairside

W2P

SolFlex

Qualification ● validated ◐ in process

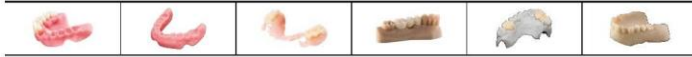
			●	●	●
	●	◐	◐	●	●
			●		
	◐	◐	◐		
	●			●	
	●			●	
	●			●	
	●	●	●	◐	●
		●	●	●	
	◐	◐	◐		
	◐	◐	◐	◐	◐
	●	●	●	●	●

	●	●	●	●
	◐	◐	●	●
	◐			
	●	●	●	●
	●	◐		
	●	◐		
	◐	◐		
	●	●		●
			●	●

				●
	●		●	●
	●	●	●	●
	●	●	●	●
	●		●	●
	●		●	●

	●	●
	●	●
	◐	
	●	●
	●	●
	●	●
	●	●

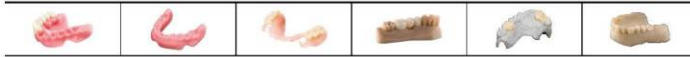
dx validation printer matrix (405 nm)



	denture/C&B						aligner/splint/surgical guide					model					tray/lbt/cast		
formlabs																			
Form 4B		●		●		●			●	●				●	●				
RAYSHAPE																			
Edge E2		●		◐		●			◐	◐									
Edge Mini		●				●													
MICROLAY																			
Eve Pro														●					●
Aidite																			
CPD-100	●		◐			●			◐	◐									
phrozen																			
Sonic 4K		●												●	●			●	●
SHINING 3D DENTAL																			
Accu-Fab L4D		●				●								●	●				●
AccuFab CEL		●				●								◐					
Accu-Fab DIs		◐												●		●			●
MTC																			
Meccatronicore									◐										◐

Qualification ● validated ◐ in process

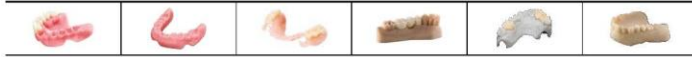
dx validation curing matrix



	denture/C&B						aligner/splint/surgical guide					model					tray/lbt/cast		
INK-Optik																			
Otoflash G171 N2	●	●	●	●	●	●	●	●	●	●	●	●	●	●	●	●	●	●	●
NK Flash 250/500	●	●	●	●	●	●	●	●	●	●	●	●	●	●	●	●	●	●	●
NK Flash 150	◐	◐	◐	◐	◐	◐		◐	◐	◐	◐	◐	◐		◐	◐	◐	◐	◐
ASIGA																			
Asiga Cure		●	●	●	●	●	◐	●	◐		●	◐	◐		◐	◐			◐
rapidshape																			
Cure, RSCure, ProCure	●	●	●	●	●	●	◐	●	●		●	●	●		●	●	●	●	●
RS Cure XL	●	●	●	●	●	●	◐	●	●		●	●	●		●	●	●	●	●
straumann																			
P Cure	●	●	●	●	●	●	◐	●	●		●	●	●		●	●	●	●	●
dentalfarm																			
Photopol	●				●	●				●		●			●	●	●	●	●
Glidewell																			
ILCD				●														◐	
LuxCreo																			
ILCP		◐	◐	◐				◐											

Qualification ● validated ◐ in process

dx validation curing matrix



BB-Cure

BB-Cure N



Phrozen Cure

ivoclar

PrograPrint Cure



Form Cure (2nd Generation)

Form Cure



PCU Pro

PCU 3.0



PCU LED N2

SHINING 3D DENTAL

FabCure

Qualification ● validated ◐ in process

BB-Cure											●			●	●			●
BB-Cure N							◐			405nm ◐						◐		◐
Phrozen Cure											●			●	●			●
ivoclar PrograPrint Cure			●	●	●		●	●	●	●					●	●		●
formlabs Form Cure (2nd Generation)		◐	◐	◐	◐		◐	◐										
formlabs Form Cure											●				●	●		●
HEYGEARS PCU Pro		●	●	◐			◐											
HEYGEARS PCU 3.0	●	●	◐	●	●		◐											
Drevo PCU LED N2		●	●	●			●	◐										
SHINING 3D DENTAL FabCure											●			●	●			●

dx validation curing matrix



PRUSA
RESEARCH
JOSEF PRUSA

MedicalCW One

RAYSHAPE[®]

ShapeCure D

Dentsply
Sirona

Digital Cure
Large Capacity Unit

Digital Cure
Curing Unit

Qualification ● validated ◐ in process

											●			●	●					●
		◐	◐	◐	◐		◐			405nm ◐	●			●	●					●
		◐	◐	◐	◐															
		◐	◐	◐	◐															

Materials that matter

Thank you for your attention

Detax GmbH
Carl-Zeiss-Str. 4
76275 Ettlingen, Germany
Detax.de

© Detax GmbH